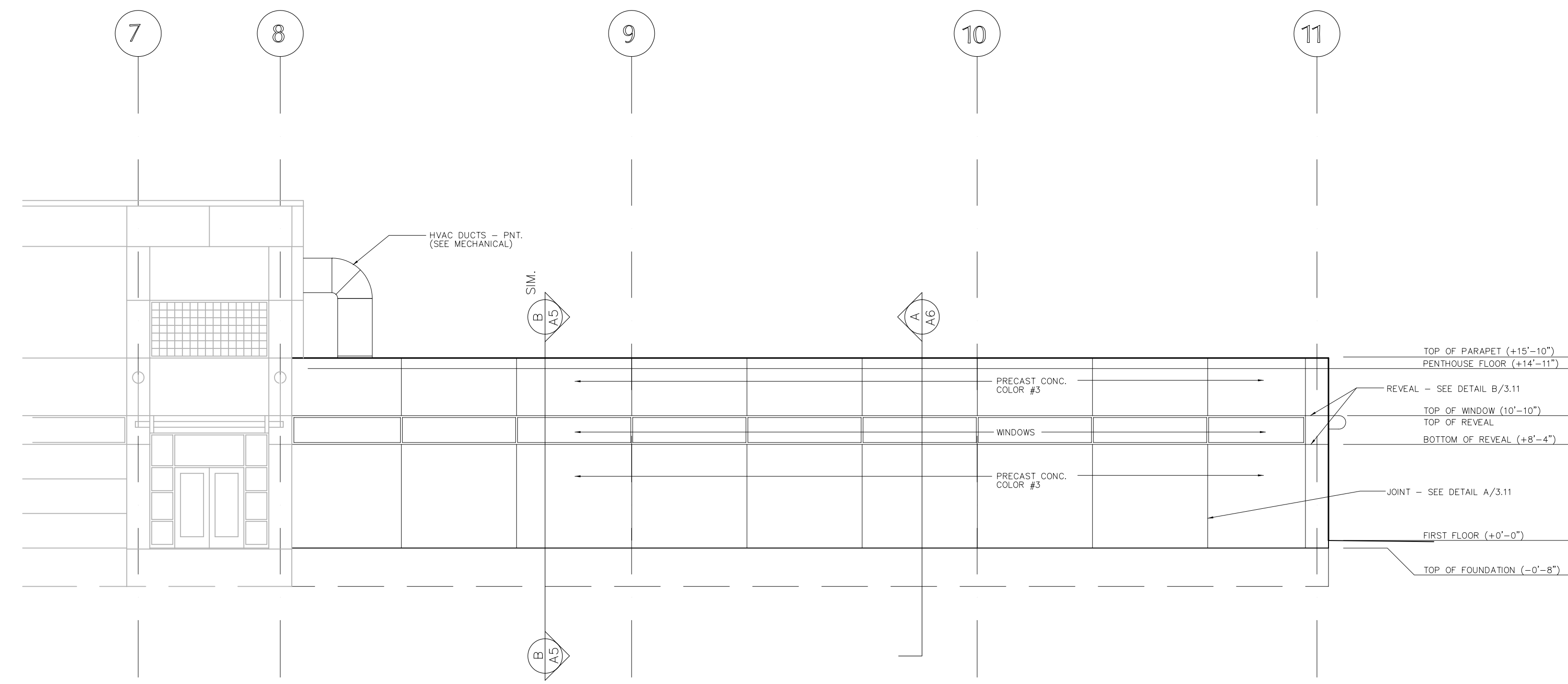
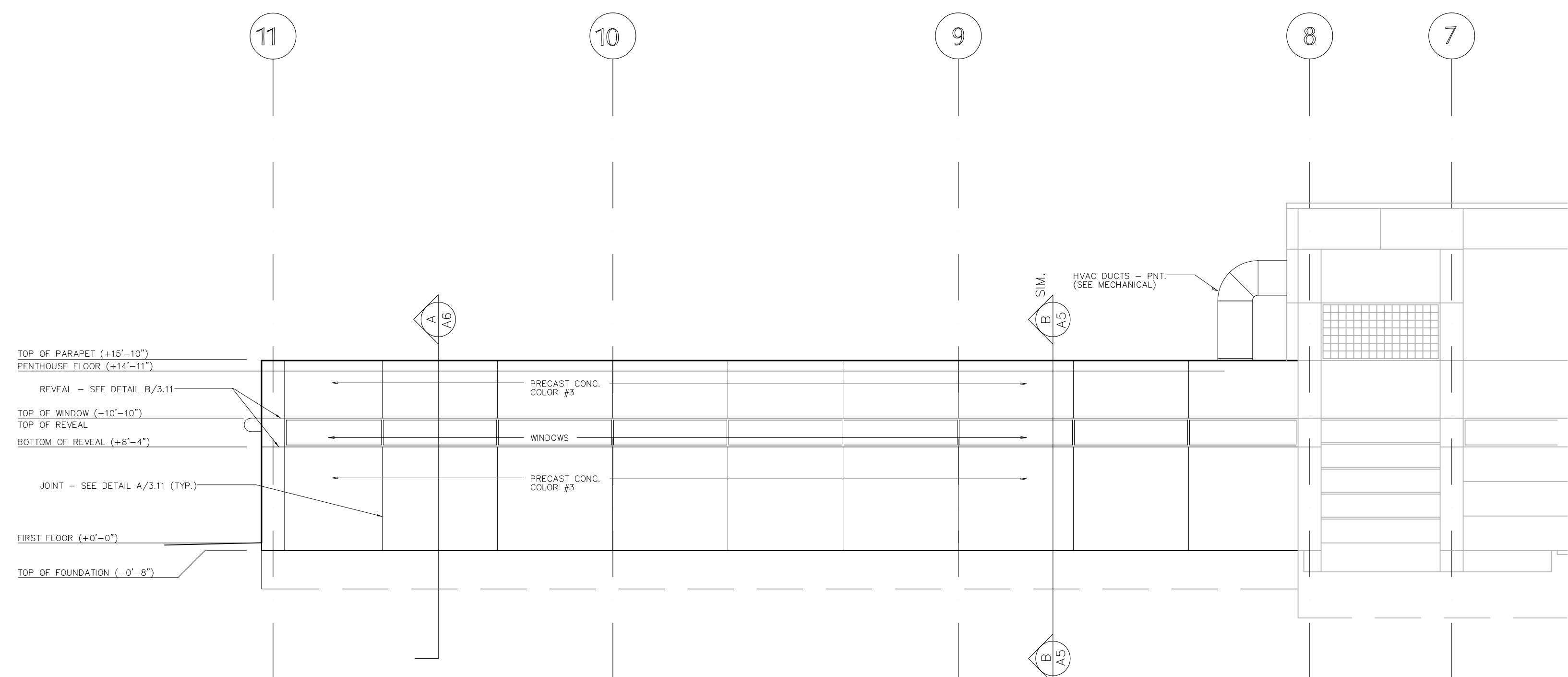


- NOTES**
1. TAPERED INSULATION SHALL SLOPE 1/4" PER FOOT. PROVIDE 3" MINIMUM INSULATION AT ROOF DRAINS.
  2. THE ELEVATION OF OVERFLOW SCUPPERS (+14'-0") IS THE BOTTOM OF THE HOLE IN THE WALL FOR THE SCUPPER. SEE STRUCTURAL.
  3. ACOUSTICAL INSULATION REQUIRED AT ACOUSTICAL DECK - SEE STRUCTURAL.



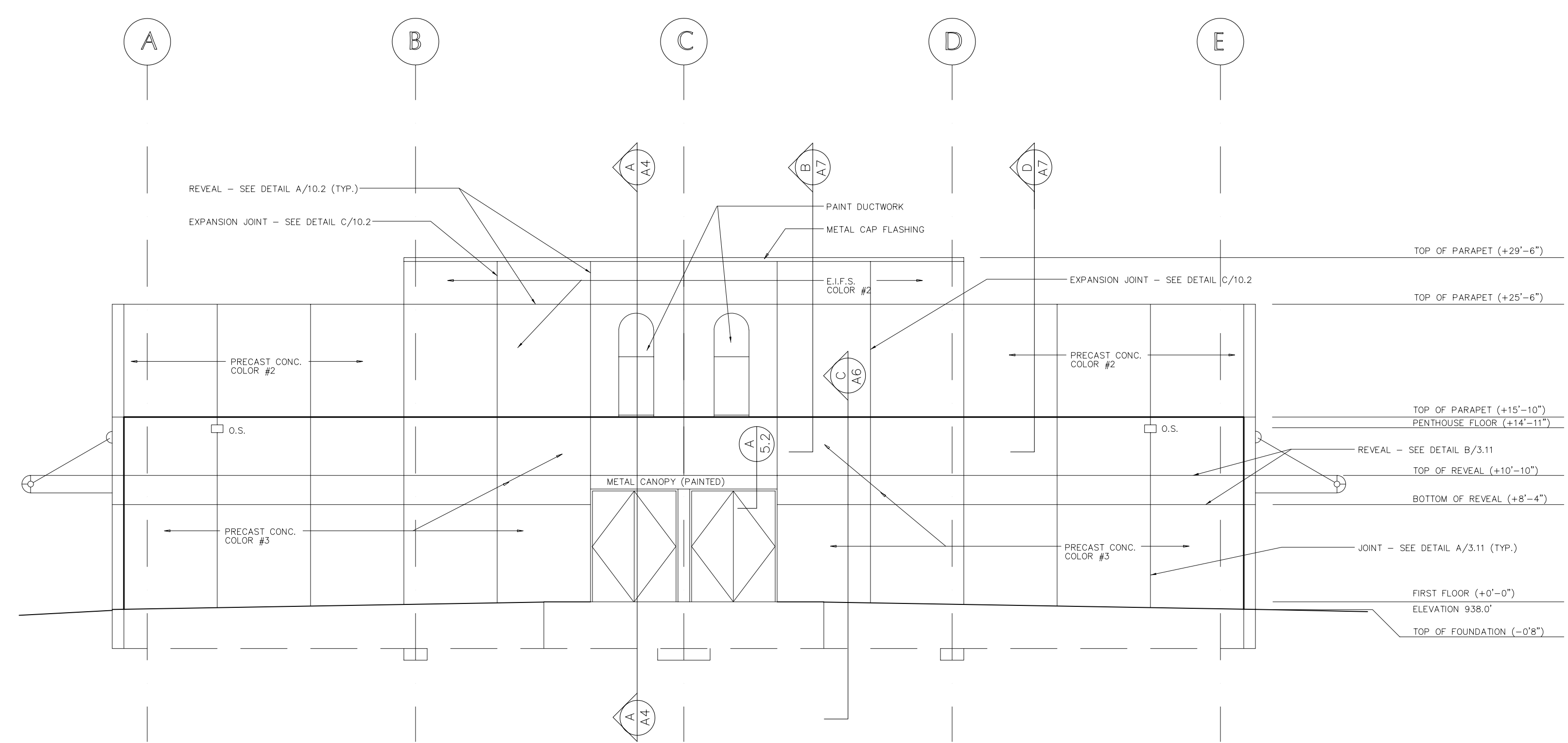
**WEST ELEVATION (ALTERNATE No. 1)**

1/18" = 1'-0"



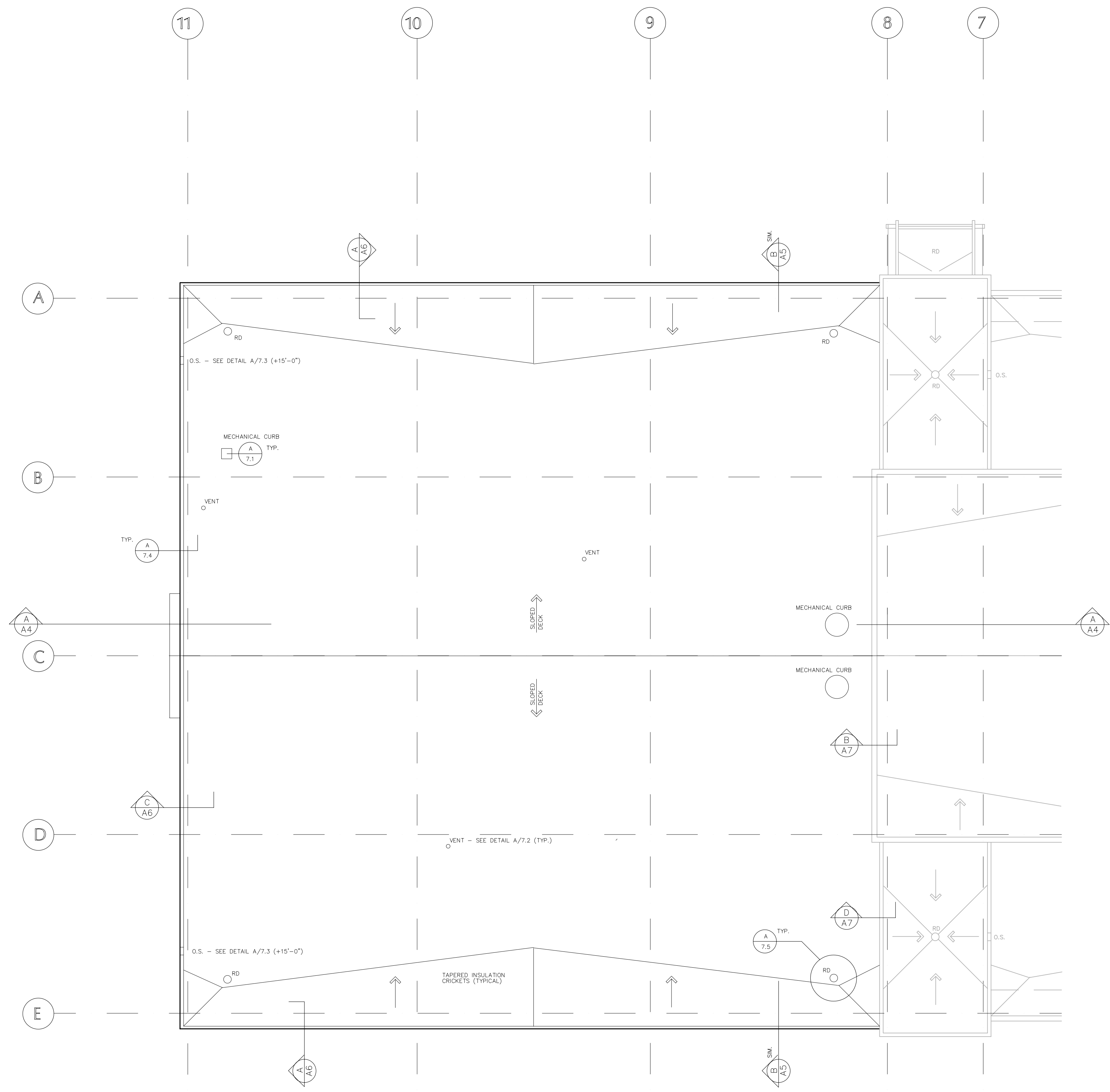
**EAST ELEVATION (ALTERNATE No.1)**

1/18" = 1'-0"



**SOUTH ELEVATION (ALTERNATE No. 1)**

1/8" = 1'-0"



**ROOF PLAN (ALTERNATE No. 1)**

1/8"=1'-0"

**ADVANCED  
TECHNOLOGY  
CENTER -  
DMACC**  
ANKENY, IOWA

**A12**

Date: AUGUST 16, 1993

