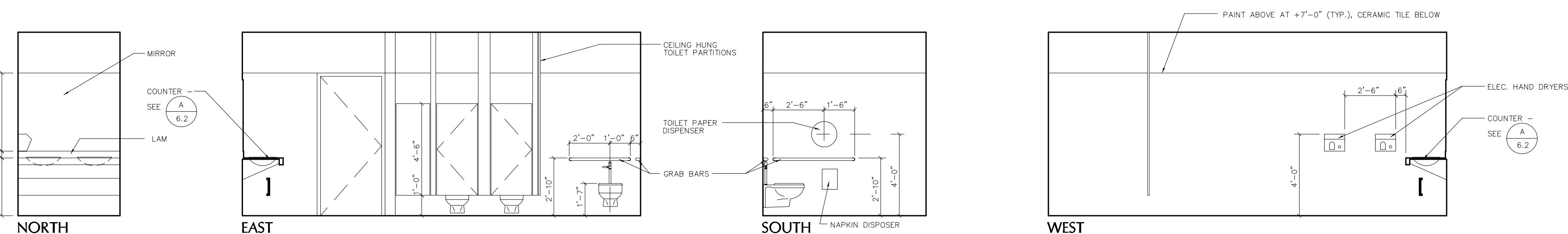
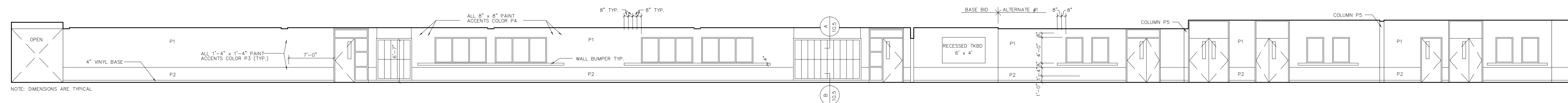


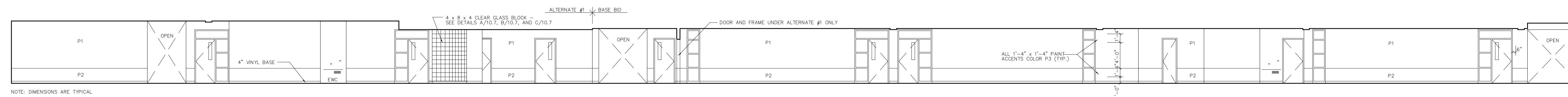
**B** INTERIOR WALL ELEVATIONS / WOMEN - 125  
1/4"=1'-0"



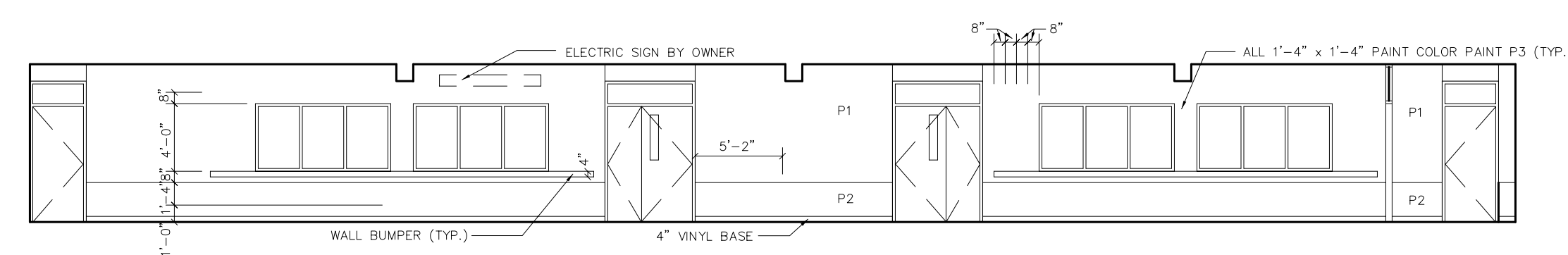
**C** INTERIOR WALL ELEVATIONS / WOMEN - 110 (ALTERNATE No. 1)  
1/4"=1'-0"



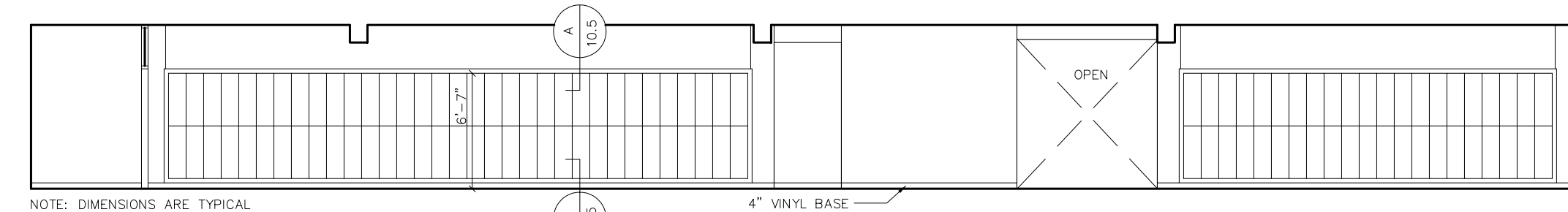
**E** EAST ELEVATION - CORRIDOR 131/137  
1/8"=1'-0"



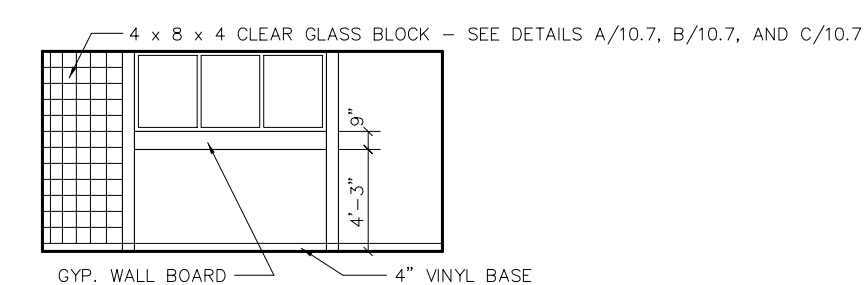
**F** WEST ELEVATION - CORRIDOR 131/137  
1/8"=1'-0"



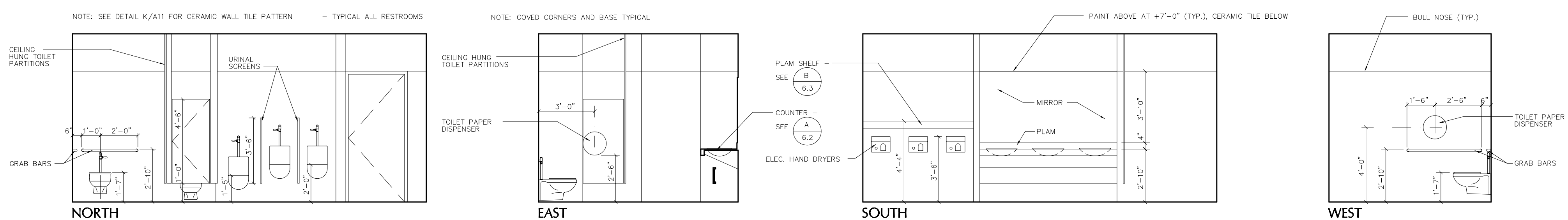
**G** NORTH ELEVATION - CORRIDOR 129  
1/8"=1'-0"



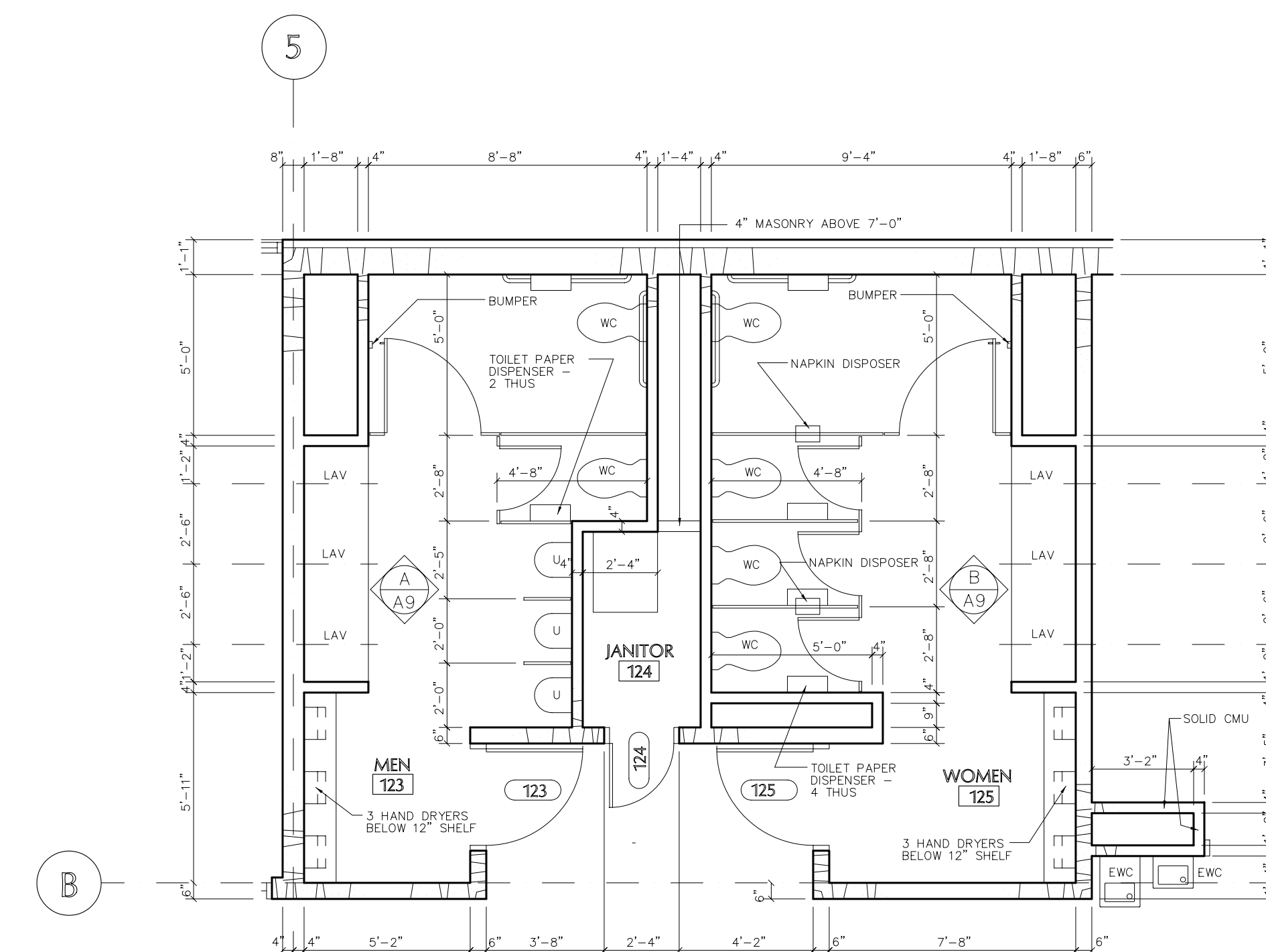
**H** SOUTH ELEVATION - CORRIDOR 129  
1/8"=1'-0"



**J** EAST ELEVATION - RECEPTION 135  
1/8"=1'-0"



**A** INTERIOR WALL ELEVATIONS / MEN - 123  
1/4"=1'-0"



ENLARGED TOILET PLANS  
1/4"=1'-0"



ADVANCED  
TECHNOLOGY  
CENTER -  
DMACC  
ANKENY, IOWA