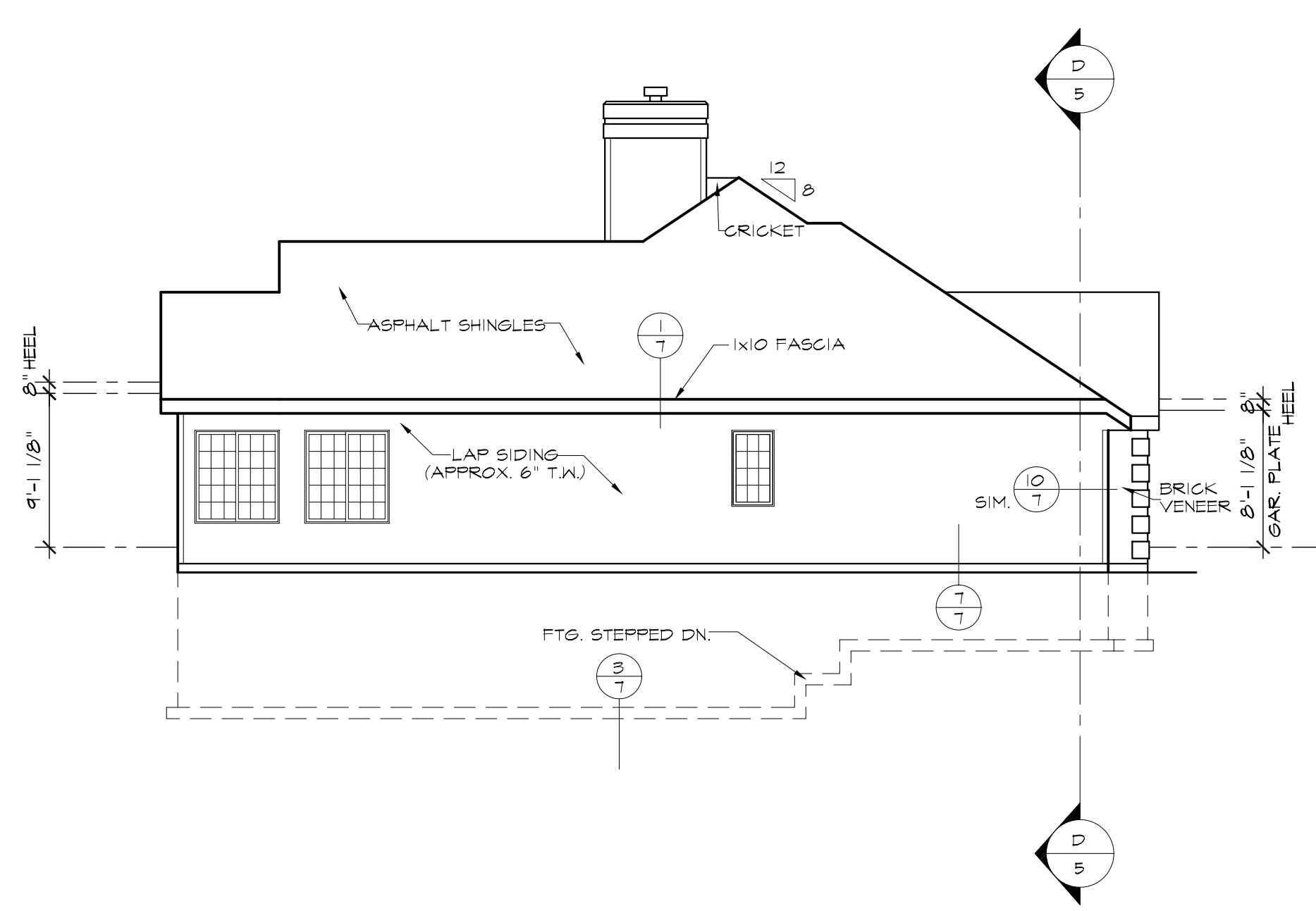
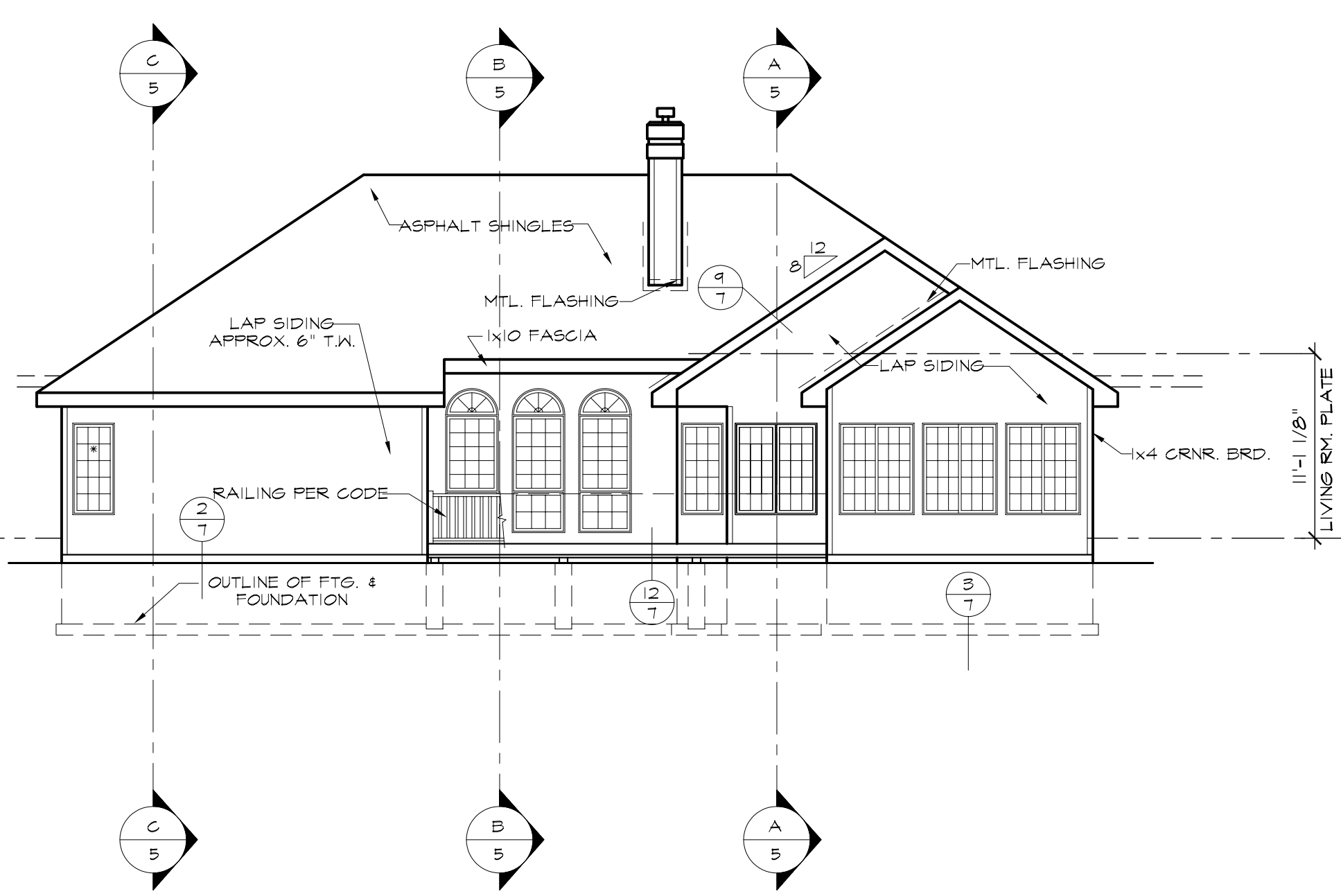


FRONT ELEVATION
SCALE: 1/4" = 1'-0"

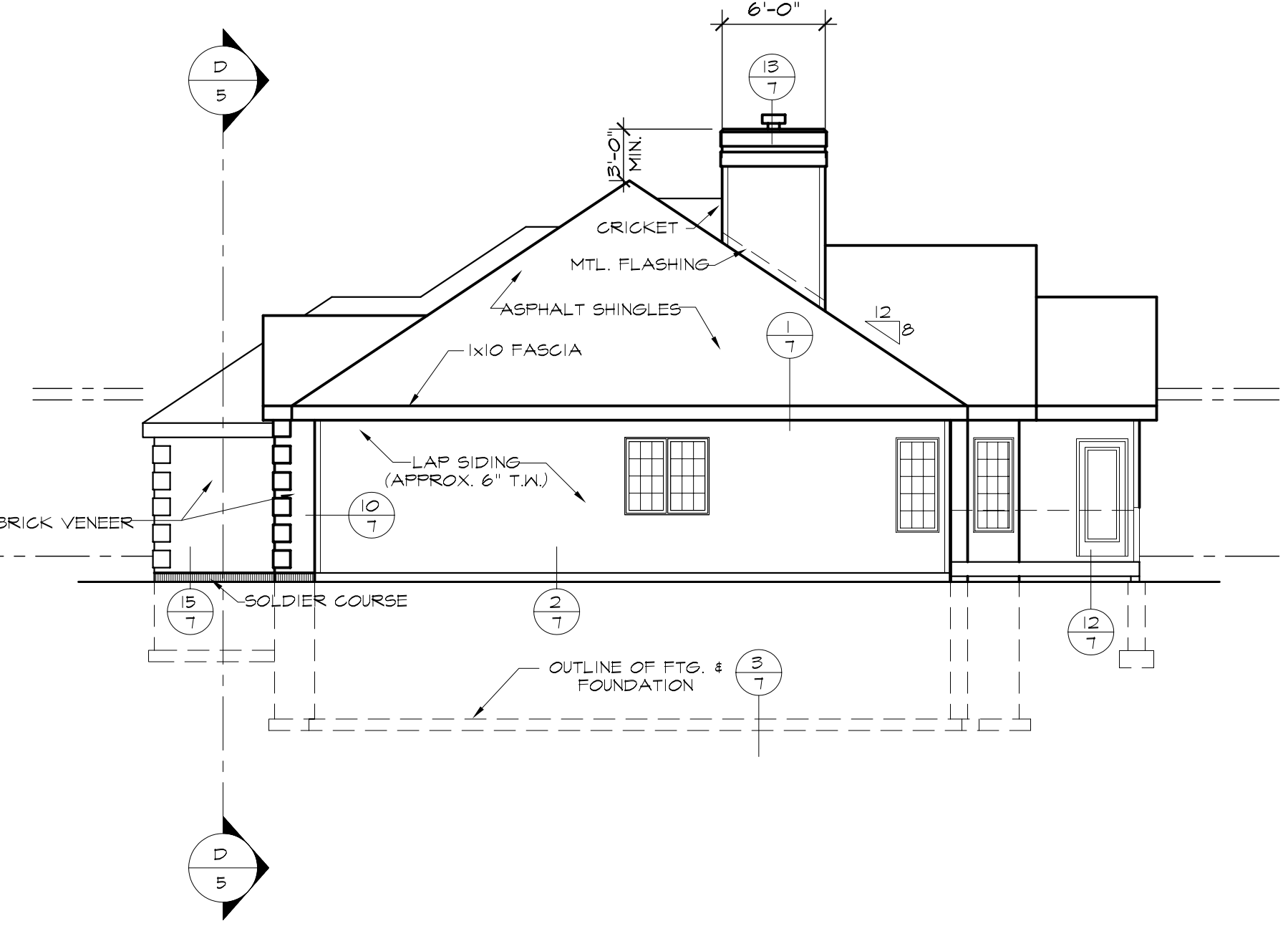
* EMERGENCY EGRESS
ONE SASH OF THIS GROUP MUST
COMPLY WITH GOVERNING FIRE
AND BUILDING CODES.



LEFT ELEVATION
SCALE: 1/8" = 1'-0"



REAR ELEVATION
SCALE: 1/8" = 1'-0"



RIGHT ELEVATION
SCALE: 1/8" = 1'-0"

COPYRIGHT BLOODGOOD PLAN SERVICE
THESE WORKING DRAWINGS ARE PROVIDED TO MAKE
THE FULL DETAILS OF THE BUILDING AVAILABLE TO
THE PURCHASER. THEY MAY ALSO BE USED AS
CONSTRUCTION DOCUMENTS. ALL NOTES AND DOCUMENTS
ARE SUBJECT TO CHANGE ACCORDING TO CODES,
BUILDING REQUIREMENTS, AND/OR SITE CONDITIONS.
ANY FORM OF DIRECT REPRODUCTION OF THIS DESIGN
IN WHOLE OR IN PART IS STRICTLY PROHIBITED

HDG 97001
BLOODGOOD PLAN SERVICE
400 LOCUST STREET, SUITE 265 DES MOINES, IA 50309 PH. (515) 283-0404

Date: _____
 Drawn By: _____
 Revisions: _____