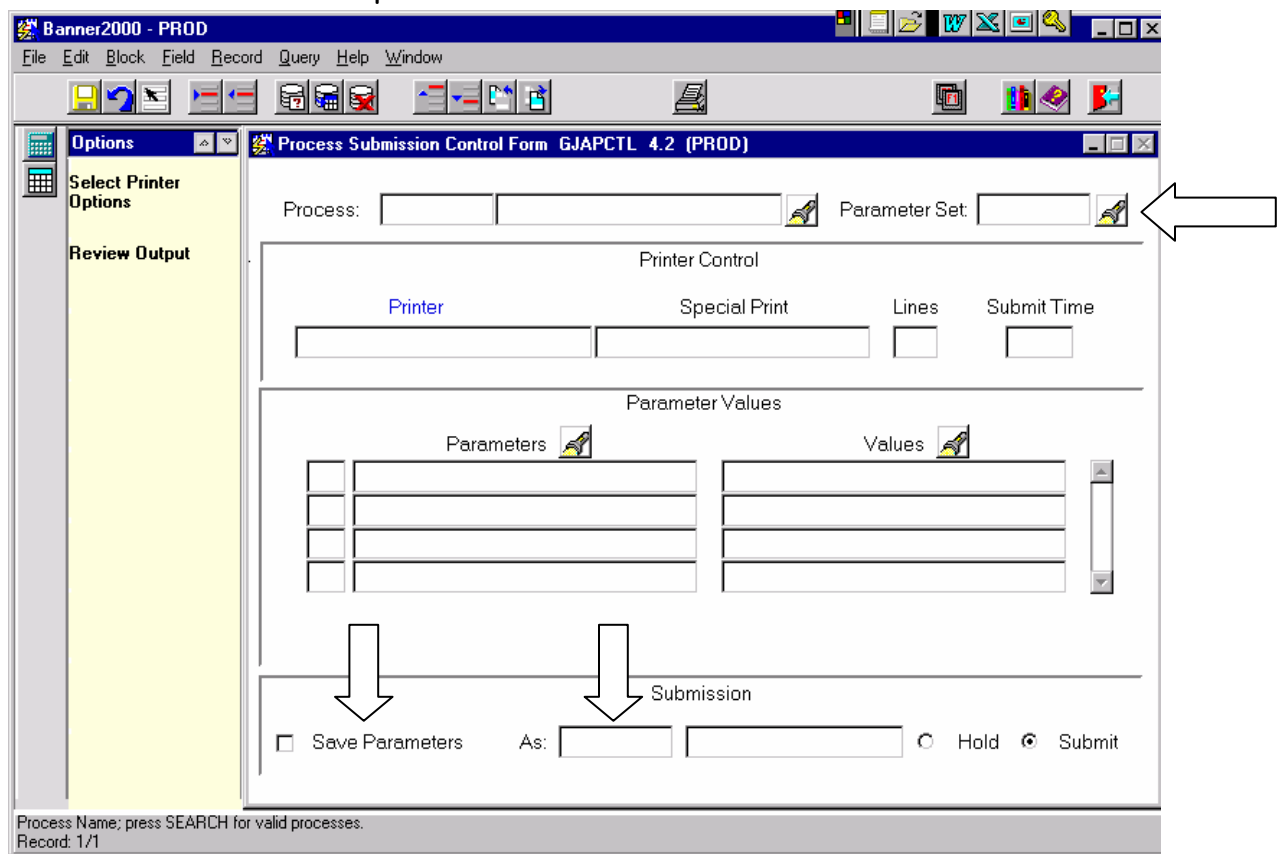


Parameter Sets & Banner Reports

Parameter sets allow you store the parameter values that you enter on GJAPCTL when you run a report, so that you can use them again without re-keying them. You may want to use a parameter set on reports that you run repeatedly that take a lot of time to enter the parameters or when the parameters are so complex that once you get them figured out you want to save your work.

The elements involved in parameter sets are indicated below.



Creating a Parameter Set

After you have filled in all the parameters and are ready to run a report, click the *Save Parameters* box, enter a name for your parameter set in the *As* box, and a brief description in the next box. When you save the report request, so that the report will run, your parameter set will be saved as well.

Save Parameters As:

A parameter set is specific to only the report for which you created it and only you can use it.

Using a Saved Parameter Set

To use a parameter set that you have previously saved, enter the name you gave it in *Parameter Set*, before navigating to the *Printer Control* block. When you navigate to the *Parameter Values* block, the values you saved will be filled in. You can then change, add or delete parameters without changing your saved values.

Process:  Parameter Set: 

Changing a Saved Parameter Set

If you wish to change a previously saved parameter set, enter the new parameter values that you desire and check the *Save Parameters* box when you submit the report to run. The new parameter values will replace the old values and the old parameter values will be lost.

Save Parameters As:

Note that when you checked the *Save Parameters* box that the parameter set name and description will automatically filled in for you.

Creating a New Parameter Set from an Existing Parameter Set

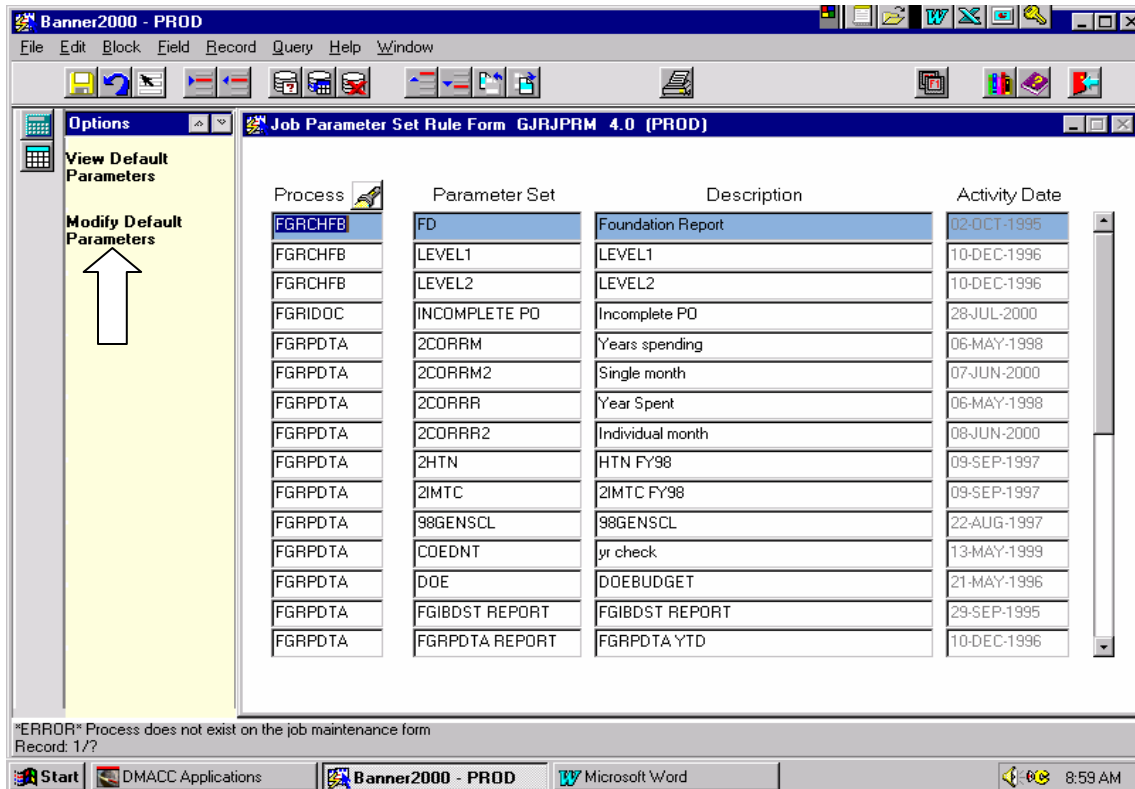
You can create a new parameter set from an existing set by giving it a different name when you save it. Both parameter sets will now exist.

Process:  Parameter Set: 

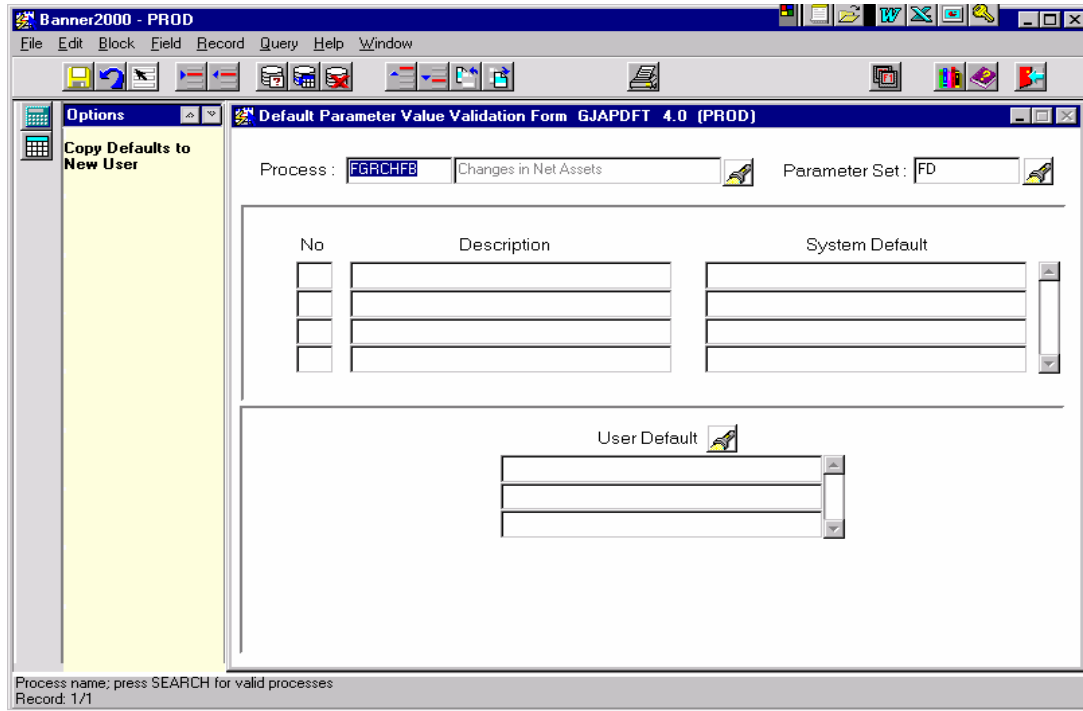
Save Parameters As:

Copying a Parameter Set Between Users

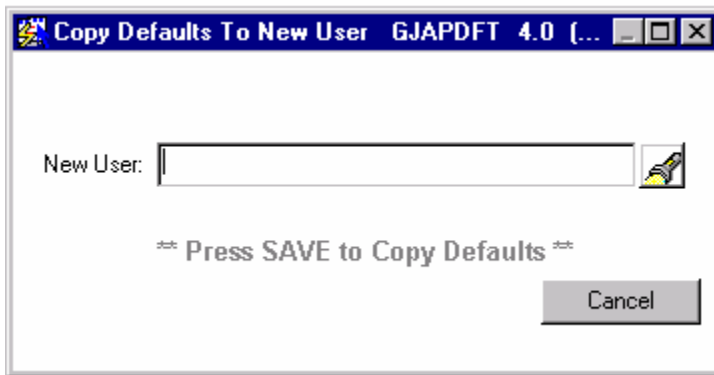
To copy a parameter set between users, go to screen GJRJPRM. Move the cursor to the *Process* (report) and *Parameter Set* combination that you wish to copy and click on *Modify Default Parameters*



Navigate to the next block and click on *Copy Defaults to New User*.



Enter the user ID to which the parameter set should be copied in the *New User* box.



Click on the *Save* icon to complete the copy.

