



# The Bear Facts

Volume XVIII Issue 1

Des Moines Area Community College, Boone Campus

Sept. 20, 1989

## A trek is planned

by ROB HOOK and  
ANGIE LANSMAN

If you are looking to take a break from the hectic campus life, consider going on the DMACC trip.

DMACC - Boone Campus will sponsor a three-day trip to Minneapolis Oct. 26-28.

Although all of the details are not known for sure at presstime, the group intends to tour many unique places and points of interest in the city.

The trip contains several options for entertainment, including a multi-theatre tour, the Minneapolis Zoo, the Minneapolis Institute of Art, the IDS Tower, a tour of the Stroh's Brewery, and general downtown shopping.

The multi-theatre tour includes a musical at the Chanhassen Dinner Theatre, a British farce entitled "Run for Your Wife" at the Old Log Theatre, and a backstage tour of the Guthrie.

These are just a few of the spots of interest that Minneapolis has to offer.

Depending on the students' interests, they have the option to divide up and tour their own specific interests. Various DMACC - Boone Campus clubs will be doing so.

If the trip generates a large number of people, a bus will be chartered for the travel.

Required fees are \$33 bus fare per person, based on 40 persons per bus, and an approximate hotel fee of \$46 single or double occupancy, or \$49.50 for a triple or quadruple occupancy.

The bus will depart Boone at 8 a.m. Thursday morning and will return Saturday evening.

The trip is open to both students and the public, and everyone is encouraged to attend.

A \$75 deposit is needed by Sept. 25 to help reserve the bus and hotel.

Anyone interested or needing more information should contact Kay Mueller in Room 111 or Mary Jane Green by Friday, Sept. 22.



Joe Meyers takes advantage of the Bear Pit at Boone Campus to do some serious studying. -Photo by Lori Burkhead.

## 'The Toys Take Over Christmas' is fall play

by ROB HOOK  
Editor-in-Chief

"The Toys Take Over Christmas" by Patricia Clapp has been chosen as the Boone Campus fall drama production, with tentative performance dates of Dec. 9 - 10 at 8 p.m. in the Boone Campus auditorium.

The play, a show for all ages, consists of a cast of four men and six women.

The production revolves around a hardhearted toymaker who refuses to sell any of the dolls he makes. The toymaker's magic has made the dolls almost real, and they want to escape the workshop to have fun with other children.

The show will run approximately 40 minutes.

Rehearsals will begin around mid-October, and cast members can expect late afternoon rehearsals three or four days a week.

Auditions will be conducted in the near future, however, anyone interested in participating should contact Kay Mueller in Room 111 as soon as possible.

Besides actors, others are needed for set construction, painting, props, costumes, and makeup. Anyone interested in these areas should also contact Mueller immediately.

## SAB nominations, election coming up

by JOE MEYERS  
Staff Writer

Nominations for the Boone Campus Student Action Board (SAB) are now being accepted in the main office.

Nominations are to be handwritten and turned in during the week of Sept. 25-27.

Elections will be the following week, Oct. 2-4. A voting machine will be in the main office.

Election winners will be contacted by George Silberhorn Oct. 4 and the first meeting will be set.

Meetings will be held once a month.

The board consists of 10 members. Six are chosen at large, and the others are selected from various clubs recognized by the school, including athletics, Nursing Students United, leisure studies, PBL, and Rotaract. New members may be added if new clubs are started.

Each member of the board must maintain a 2.0 cumulative grade point average and have a minimum of nine credit hours.

SAB has a budget of about \$7,000 per semester. Supported by the budget are athletics, *The Bear Facts*, campus recreation, cheerleading, drama, honor society, intramurals, maintenance of the Campus Center, Nursing Students United, PBL, Rec Club, Rotaract activities and student government.

Subsidiary boards are formed to aid in decision-making.

The programming board plans events such as concerts, parties and dances.

The campus life and athletics board provides information concerning parking, library services, intramurals and the student newspaper.

The professional development board recommends lecturers and leadership groups, while the special events group plans homecoming and spring fling.

## Boone Campus has record enrollment

by ROB HOOK  
Editor-in-Chief

A record enrollment of approximately 875 students has been set at DMACC - Boone Campus this fall. This is the highest enrollment figure in the history of the Boone Campus since its construction in 1968.

The figure represents an increase of over 10%, compared to 799 students enrolled last fall.

There are several reasons for the increase in enrollment, according to Dean Kriss Philips.

Among those reasons are smaller class size, the return of many untraditional students (students who are returning to school after several years of absence), and the general quality of education available at Boone.

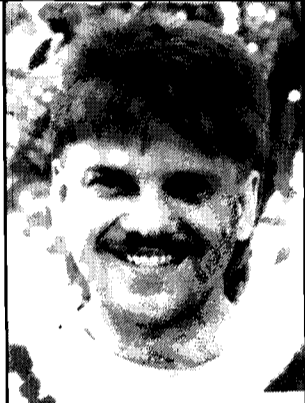
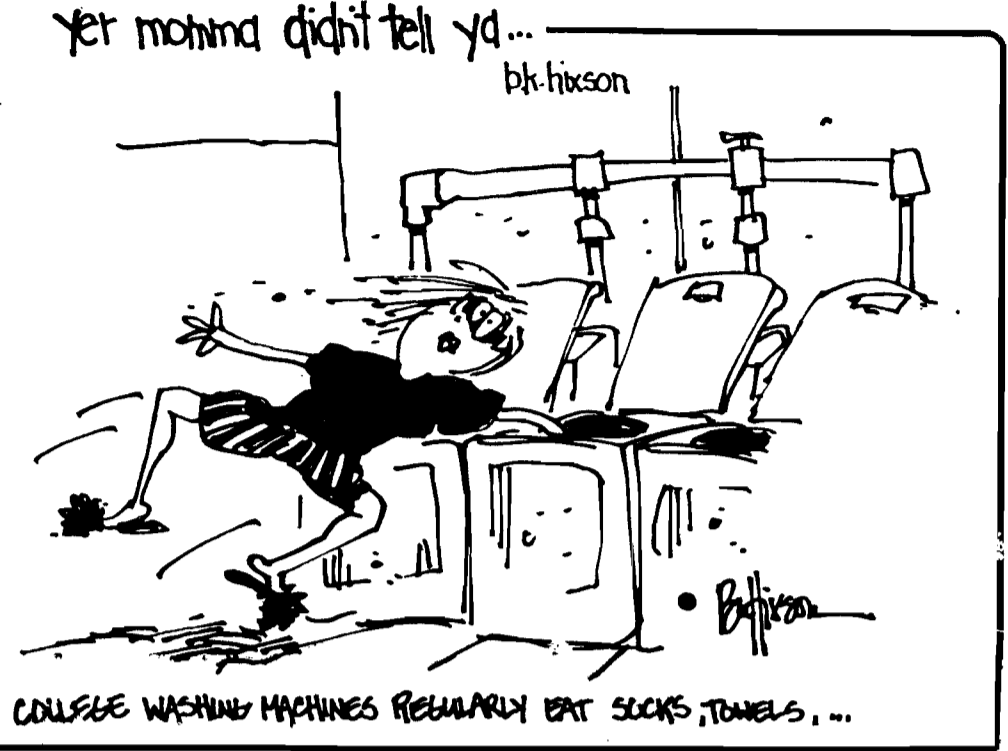
Another major factor to consider is students wishing to transfer to Iowa State University. Students have found in the past that DMACC is a very successful route in preparing for four-year programs at ISU, according to Philips.

One of the disadvantages of the record enrollment, however, begins with the building space. The structure was built for a maximum of 750 students. Many students are finding themselves a little crowded in the hallways and restrooms this fall.

The student parking lots also fill up rapidly in the early morning hours, so students find themselves occasionally walking a bit of a distance to their classes.

Concerning the somewhat crowded conditions, Philips stated, "If the population here at the Boone Campus continues to rise, a study will be conducted by the board of education or a committee to analyze space available and space needed."

# COMMENTARY



## A note from the Editor

by ROB HOOK  
Editor-in-Chief

The fall semester here at Boone Campus began on a positive note, with a record enrollment of many new and returning faces.

ROB HOOK

And now, here's a little about myself. Last semester, when I attended Boone Campus, I was living in Ames. During the summer, I moved to Des Moines. Many people thought I should transfer to Ankeny Campus and said it would be foolish for me to drive so far to Boone each day.

However, my side of the story is this: Last semester I had several outstanding instructors who made a very positive im-

pression on me. And, I didn't forget the helpful counselors and office personnel here. Overall, I was very pleased with the Boone Campus, and I began to take pride in being a Boone Campus student.

It's good to see people take an interest in furthering their educations, and I'm especially pleased as the editor of *The Bear Facts* to have some of those people on my staff.

Given those factors, why would I want to transfer?

*The Bear Facts* staff takes pride in its paper and will try to objectively cover any and all events throughout the school year. We are always open to any suggestions you may have and encourage letters to the editor.

Have a great semester!

## CAMPUS VIEW

QUESTION: How do you like DMACC?

by LORI BURKHEAD  
Photographer



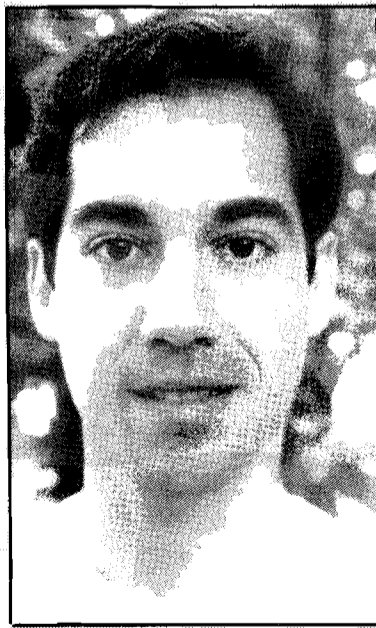
JOANNE ZENOR  
BOONE, IOWA

I came back to school after many years and am enjoying it very much.



TONIA MC NUNN  
AMES, IOWA

I've been out of high school for almost six years so I appreciate the class size and access to professors for help. I think DMACC has done a good job offering night classes for working students.



STEPHEN HERR  
BOONE, IOWA

I like the friendly, helpful people at DMACC. It makes coming back to school and learning a lot more fun.



LINDA BERG  
OGDEN, IOWA

I am having a lot of fun here, but the homework is overwhelming.



ANGI CAIN  
WATERLOO, IOWA

I transferred here from UNI so the classes are much smaller. I do like classes all in one building, and it's easy to get to know the instructors.

# CAMPUS LIFE

## Boone Campus Library has much to offer

by JAYNE SMITH  
Librarian

Welcome to the Boone Campus Library/Media Center!

The library is here for you to use. It is more than a storehouse for books; it is a resource center for a wide range of subjects. Whatever your information needs, the library staff is glad to help you in any way they can.

### Staff

The library staff includes Jayne Smith, librarian, and Dona Ryan, library clerk. Jill Burkhart, *The Bear Facts* advisor and journalism instructor, is temporarily helping out, also, until the library technician position is filled.

Returning work study students include Dawn Anderson and Misty Spencer. New work study students are Pam Gengler, Mike Pepper, Rob Hook, Suzanne Kestel, Laura Ohm and Barb Hanna.

### Checkout Procedures

Beginning this fall, students and staff must have a library card to check out most materials from the library.

The library card is free, but if it is lost or stolen, the cost for replacing the card is \$1.

Please apply for your card at the library circulation desk during any of the hours the library is open.

### Library Hours

Library hours are 7:30 a.m. to 8:30 p.m. Monday through Thursday, and 7:30 a.m. to 4 p.m. Friday.

During vacation and in-service days, the library hours are posted in advance at the library entrance.

### What We Have

The Boone Campus Library has a collection of approximately 18,000 circulating and reference books, 110 periodical subscriptions, and a variety of audiovisual materials. These include filmstrips, videotapes, records, cassette tapes, slides, kits, and transparencies.

All materials (except periodicals) are listed in the library's card catalog.

### Loan Periods

Books in the general collection and pamphlets from the vertical file may be checked out for two to three weeks and renewed once for an additional two weeks.

Videotapes and back issues of magazines and newspapers may be checked out for two days.



Kay Mueller, speech and drama teacher, Barb Hanna, library work study student, and Jayne Smith, librarian, show enthusiasm displaying new library cards. All students, faculty, and staff must have a

library card to check out materials. There is no fee. The new library card system is designed to save time for both students and library staff. -Photo by Lori Burkhead.

Reserve materials may be checked out for two hours. (Instructors may request other loan periods on materials for their classes.) Reserve materials may be checked out overnight at 1 p.m. or later and are due by 9 a.m. the next school day.

Cassette tape players may be checked out overnight on the same basis as reserve materials.

Audiovisual materials requiring special equipment should be used in the library.

Reference materials are not circulated, but remain in the library at all times.

### Returning Materials

When you return books, use the book drop located at the circulation desk during regular hours.

Another book drop is located in the hall outside the library for use when the library is closed.

### Interlibrary Loans

If books or articles are wanted and are not available in our library, they can be ordered from other libraries.

Give the information about the item wanted (author, title,

publisher, etc.) to the librarian. Most requests can be filled within one week. There is no charge for this service.

### Listening/Viewing Area

The library is furnished with equipment for using audiovisual materials on an individual basis. You can get help with the equipment from any library staff person.

Videotapes of some TV courses are available in the library during the term that course is offered. You may request the appropriate tape at the circulation desk and view it in the library conference room.

### Typing Area

The library has several typewriters which are available during all library hours. There is no cost for using these typewriters, but the library does not provide typing paper or other supplies.

### Computer Area

There are a few computers for student and staff use in the library. These computers cannot be reserved, but rather, are on a first-come, first-served basis.

### Photocopier

A photocopier for copies on either letter or legal-sized paper can be used at a cost of 10¢ per page.

Transparencies can also be made on the copier at a cost of 40¢ a sheet. Ask at the circulation desk for help and additional information.

### Group Study Room

The library conference room is available for group use. This room may be reserved in advance. Contact a staff member for assistance.

### Additional Comments

Smith comments, "We hope that students will become steady users of the library. Pleasures related to library use are longlasting and will continue and accumulate long after formal education is completed."

Welcome to DMACC's Boone Campus Library!

## FREE CATALOG

*of Government Books*

*Send for your copy today!*

For a free copy of this catalog, write—

Free Catalog

P.O. Box 37000  
Washington, DC 20013-7000

## Learning Center offers much

The Boone Campus Learning Center is available to help students out in a variety of ways.

See the Center personnel for help in these subject areas:

- Math - arithmetic, algebra, finite math, math for elementary education, business math, and math for nurses.

- Science - chemistry, physics and biology.

- Reading - speed, comprehension, vocabulary.

- Study skills - textbooks, notetaking skills, test taking, test anxiety.

- Writing - composition, research papers, grammar, computer word processing, punctuation, spelling, organization.

Both individual and small group help are available. There is also audio cassette and computer-assisted instruction.

Testing services include makeup tests, challenge and ASSET tests, and skills evaluation.

Other services are Discover (career exploration), GED, high school diploma, adult basic education, and pre-admissions instruction.

Drop in The Learning Center anytime!

**SUPPORT  
THE BEARS!**

**DUDS'nSUDS®**

**COIN LAUNDRY  
and more**

**Tanning Bed  
UPS Service**

**69 Cent Movies  
Big Screen TV**

**Snack Bar  
Video Games  
Pool Table**

**Good for**

**ONE FREE TAN**  
with 5 or more  
session purchase

COUPON

**FREE WASH**  
every third wash  
(with paid dry)

Expires 10-15-89

**1324 S. MARSHALL  
BOONE — 432-1757**

# CAMPUS LIFE



Morty Poling, Don Porter, Paul Miller (supervisor), Judd Rickert, and an unidentified man pouring cement for the new patio.

## At last, patio, volleyball courts near completion!

by ROB HOOK  
Editor-in-Chief

Construction of DMACC - Boone Campus' two new volleyball pits and patio is nearing completion at last, with the new addition expected to open anytime, pending weather conditions.

The addition includes two regulation sand volleyball courts, with each court measuring a 30' x 60' playing area and a total court size of 36' x 66'. The patio includes benches and other seating accommodations.

The idea for the volleyball pits came from George Silberhorn, Boone Campus director of student services.

Silberhorn first got the idea for the new courts here when he attended the National Intramural and Recreational Sports Association (NIRSA) Convention in Denver last April.

According to the experts at NIRSA, volleyball is the most rapidly growing team sport in America today. Silberhorn felt that was more than enough reason for construction of some volleyball courts right here at Boone Campus.

The area will remain open during daylight hours and is open to any students who would like to play. Volleyballs can be loaned from the office, upon completion.

The courts and patio are being built by Grabau Construction, Boone.

## Here's some info about tutoring services

by RANNE HILSABECK  
Staff Writer

As we begin the semester this fall, some students are finding problems with their courses. The campus does not have a tutor available at this time, but may be acquiring one soon.

If you are seeking help for a math course, there is a work study student available. Contact John Doran in Room 224.

If you are having difficulty with an English course, there are opportunities for assistance. Check with The Learning

Center. You'll see that there are at least four individuals with English degrees to aid students who feel they need it. They would like to assist in any way possible. A student can contact one of these individuals in The Learning Center from 8 a.m. to 8 p.m. Monday through Thursday, or Friday from 8 a.m. to 3 p.m.

If you are writing a paper for any class, it would be to your advantage to contact one of the individuals in The Learning Center also.

Sally Tanner is willing to assist any students with a problem dealing with a math course, such as finite, elementary education, or algebra. She is available in The Learning Center Monday through Thursday from 4 to 8 p.m.

Accounting students may sign up in The Learning Center for help.

Any student who feels he or she has the ability and skill of becoming a tutor may contact Sunny Powers in The Learning Center.

## Displaced Homemakers Ctr. begins third year here

Beginning its third year, the Boone Campus Displaced Homemakers Center - Project Self-Support, continues to provide services to single parents, displaced homemakers (those who are divorced, separated, widowed, or with a disabled spouse), and homemakers who have worked primarily in the home and have diminished marketable skills.

Each year, approximately 120 persons are served by the Boone Campus Center.

Career assessment and counseling are available, as well as academic, pre-enrollment, and financial aid counseling for those considering enrollment at DMACC.

Program coordinator Maggie Stone makes every effort to be aware of existing financial assistance programs which can aid students in reaching their

career goals. The Center has been awarded grants from both the Department of Education and the Iowa Commission on the Status of Women to provide services as well as financial assistance toward childcare and transportation expenses to qualifying students.

"I encourage all students who feel they might qualify to check with me if they are experiencing financial difficulty with childcare or transportation costs.

"Also, if you are experiencing difficulty with the balancing act of home and school, I'm available to listen and to pass along suggestions from others who have been there. Sometimes it just helps to talk. I'm here for that, too," Stone said.

The Displaced Homemakers Center will be sponsoring various workshops throughout

the year. A pre-enrollment workshop for adults who are considering enrollment will be offered fall and spring semesters, and a pre-employment workshop with job search training will be offered each semester.

Stone added, "Our goal is to assist displaced homemakers in their transition from home to the working world, whether that is to help them find employment with the skills they already have, or to develop a plan for further education."

For further information regarding the Displaced Homemakers Center, contact Stone in Room 128.

Office hours are 8 a.m. to noon and 12:30 to 4:30 p.m. Monday, Tuesday, and Wednesday.

COUPON

The Palace

BEAUTY and TANNING SALON

Now is your chance to SAVE

Bring in the coupon for

\$2<sup>00</sup> OFF  
a haircut

\$5<sup>00</sup> OFF  
a perm

\$1<sup>00</sup> OFF  
a tanning session  
Expires Nov. 30, 1989



M-F: 8:30 to 6  
Sat: 8 to 3  
Walkins welcome!

527 BOONE ST.  
BOONE, IOWA 50036  
TELEPHONE: 432-3375

## Boone Campus welcomes you

Des Moines Area Community College and *The Bear Facts* staff welcome you to Boone Campus and to the first issue of the campus newspaper!

We hope this first issue of the 1989-90 school year helps you become better acquainted with Boone Campus.

*The Bear Facts* is created by members of the Journalism 123 publications production class. In the coming months, be sure to pick up your free copy of the paper to stay informed about the latest happenings.

Feature stories, photos, regular coverage of sports, club news, and other stories of interest will be published on a monthly basis. Local merchants also take the opportunity to keep you informed about the special sales and promotions in their stores by advertising in *The Bear Facts*.

Rob Hook is editor-in-chief. Angie Lansman is advertising manager. Reporters are Ranne Hilsabeck, Joe Meyers, Marke Rinker, Lori Ebeling, and Julie Stoffel. Lori Burkhead is photographer. Jill Burkhart is faculty adviser.

Members of the Journalism 125 advertising class will also be responsible for several advertising accounts.

Typesetting for *The Bear Facts* is done at *The Ogden Reporter*. Layout work is done on campus, and *The Boone News-Republican* does the printing.

News stories, ideas, and signed letters to the editor are welcome. Simply place them in *The Bear Facts* mail box in the office. Happy reading!

## Financial aid meetings set

by JOE MEYERS  
Staff Writer

For your convenience, there will be some financial aid and credit meetings as well as visits from various college representatives to help you better understand and make smart decisions regarding your educational plans.

There will be a financial aid meeting Monday, Sept. 25, from 2 to 5 p.m.

Also, a meeting will be held in the auditorium Sept. 25 giving information on how to obtain an associate in arts or associate in science degree.

Watch *The Bear Facts* for more details about these meetings.

# CAMPUS LIFE

## Lough coordinates area bike-a-thon

Kelly Lough, a Boone Campus leisure studies sophomore, has been busy with things other than finding her next class, homework, and taking care of her children.

For the past couple of months, she has been quite diligent in planning the Wheels for Life Bike-A-Thon, to be held Saturday, Sept. 30 from 9 a.m. to 1 p.m. at the Hilton Coliseum parking lot in Ames.

This is the second year Lough has directed the event, which benefits St. Jude Children's Hospital, Memphis, Tenn. Last year, she did it as an independent study project.

"I've always like fund-raisers. I sympathize with parents who have children with cancer," she said.

It has taken Lough literally hundreds of hours to plan this year's event. Finding helpers, getting posters printed, handling publicity, distributing sponsor forms, getting sponsors for prizes, securing the location, and developing the schedule of events for the ride have all been a part of her job.

The Boone Campus Rec Club will provide some volunteer help the day of the ride. Over 50 riders are expected.

Lough said Dean Kriss Philips has agreed to ride in the bike-a-thon, and is actively looking for sponsors. Sponsors are encouraged to pledge 25¢ or more per mile to the rider.

Participants will be riding a one-mile, colorfully decorated track in the parking lot.

Prizes for top riders include a T-shirt for collecting \$25 or more, a T-shirt plus barrel tote bag for collecting \$75 or more, and certificates for everyone turning in money.

McDonald's will provide breakfast; Domino's Pizza, lunch; and Dutch Oven Bakery, cake.

If you are interested in having some fun while earning money for a good cause, pick up a sponsor form in Bill Alley's office, Room 122, and start gathering pledges!

Participants are encouraged to wear comfortable clothes and **check their bikes for safety** before the ride.

For more information, contact Lough. Or better yet, listen to her as a guest on KASI's Breakfast Club talk show Friday, Sept. 29 from 8:20 to 8:30 a.m., 1430 AM on your radio dial. She will be broadcasting all the details!



Julie Stoffel, relaxing and studying while in the student lounge. -Photo by Lori Burkhead.

## Campus Center Kitchen offers homemade food at unbeatable prices

Boone Campus students can still enjoy the great taste of Mom's homemade cooking by eating breakfast or lunch at the Campus Center Kitchen.

Breakfast hours are 7:15 to 10:30 a.m., with lunch being served from 11 to 1.

A continental breakfast is currently offered each morning, consisting of doughnuts, sweet rolls, juice or milk. However, plans are under way to offer a hot breakfast, such as sausage biscuits, one morning per week, according to Vicki Sieve, manager.

"We will try to add more food

items, and healthier foods throughout the year," she said.

The lunch menu varies daily, with homemade soups, casseroles, pizza, sandwiches, and other entrees available, along with fruit, produce items, and yummy desserts.

Those fattening desserts have traditionally been a favorite among Boone Campus students and faculty.

Prices are quite reasonable. A student could easily eat breakfast for under \$1, and lunch under \$2.

The Kitchen area was remodeled in the summer of 1988, to better serve Boone Campus students.

Employees other than Sieve are Dorene Buckingham, and work study students George Kordiyak and Terri McGriff.



Michelle Whyte is in complete solitude while studying in the auditorium. -Photo by Lori Burkhead.

## DMACC MINNEAPOLIS TOUR

### Required Fees:

Bus fare - \$33.00 based on 40 persons per bus  
Hotel fare - \$50.00 based on double occupancy

### Optional Activities and Fees:

Please check the events you would like to attend.

Thursday, Oct. 26

- Stroh's Brewery (no fee)
- Lutheran Brotherhood tour
- "Kiss Me, Kate" Chanhassen Dinner Theatre - \$36.00

Saturday, Oct. 28

- Guthrie tour - \$2.00

Friday, Oct. 27

- "Run for Your Wife" Old Log Theatre - \$24.50 (dinner included)
- Minneapolis Zoo \$3.20
- Minneapolis Institute of Arts - \$2.00

Name \_\_\_\_\_ Phone \_\_\_\_\_

Address \_\_\_\_\_

A \$75.00 deposit is needed by Sept. 25. Make checks payable to DMACC. Send to: Drama Department, 1125 Hancock Drive, DMACC, Boone, IA 50036.

# CLUBS



## The Bear Facts staff

The 1989 fall semester *Bear Facts* staff is, from left: Rob Hook, Angie Lansman, Ranne Hilsabeck, Lori Burkhead. In back: Julie Stoffel,

-Photo by Chris Carney

Joe Meyers, Lori Ebeling, Jill Burkhart (adviser). Not pictured are Marke Rinker and Sandy Cannon.

## Coming Events!

### WEDNESDAY, SEPT. 20—

An ISU admissions office representative, Gregory L. Millar, will visit campus from 9:30 a.m. to 12:30 p.m.

### WEDNESDAY, SEPT. 27—

ISU College of Business Administration reps will visit campus. See George or Rich in the office to schedule an individual appointment.

### FRIDAY, SEPT. 29—

Jim Wand, master hypnotist, will entertain in the Boone Campus auditorium at noon. The event is free. It is sponsored by SAB.

### SATURDAY, SEPT. 30—

Last day for returns to the bookstore.

### SATURDAY, SEPT. 30—

Wheels for Life Bike-A-Thon, organized by Boone Campus student Kelly Lough, at Hilton Coliseum parking lot, Ames, 9 a.m. to 1 p.m. More info. and sponsor forms available from Bill Alley, Room 122.

### OCT. 24—

Student Action Board elections will be conducted in the main office. Vote for your favorite candidate!

### OCT. 23-NOV. 15—

Holst Farm Management Institute short course, "Microcomputers on the Farm," offered Monday and Wednesday evenings Oct. 23 - Nov. 15. See Gary Stasko, Room 201, or ad in this issue for more info.

## Leisure studies students attend 3-day workshop

Fifteen members of the Boone Campus Rec Club attended the Iowa Parks and Recreation Association workshop Sept. 12-14 at Coralville, Iowa.

Kelly Lough, Rec Club president, said these types of workshops are learning experiences for those who attend.

"We get exposure among the people who may have jobs for us in the future. At this particular workshop, we found out what opportunities are available for us in Iowa," Lough said.

She added there was a special session for students entitled "Students: Welcome to the Profession."

That session included information on professional state and national resources, tips on resumes, job interviews, and the first six months on the job.

Speakers were various Iowa educators and professionals in the field.

Students were also invited to attend a number of sessions directed to Iowa professionals attending the workshop. Alley was a speaker at one of those sessions, and also acted as a moderator.

Boone Campus students also had the chance to meet other students from across the state enrolled in leisure studies courses at various colleges and universities.

Attending the workshop from Boone Campus were: Lough, Rebecca Bertin, Todd Fagen, Todd Fisher, Chris Kuhnle, Troy McKee, Tim Meyers, Bob Carmicheal, Michelle Kemp, Luan Pesch, Randy Kilstofte, Sue Bryant, Joyce Vowell, Kurt Kruse and Michele Bunger.

Watch for photos from the IPRA workshop in next month's issue. Meanwhile, the Rec Club is gearing up for the national convention in San Antonio, Texas, in October.

**BILDEN'S**

**SAV-MOR Drug**

Serving Midwest Families For A Century

Phone 432-1304

804 Story St.

Boone

"We support the BEARS"

**HUNTER'S 66**  
**Convenience Store**

**and Car Wash**

1616 S. Story St. - Boone

**OPEN 24 HOURS**

**DMACC**

DES MOINES AREA  
COMMUNITY  
COLLEGE

Stop by the

**BOONE CAMPUS  
BOOKSTORE**

for all your school supply needs

## NSU planning semester

by JULIE ANN STOFFEL  
Staff Writer

Nursing Students United is one of the largest student-run organizations on campus. Its membership consists of over 100 nursing and pre-nursing students.

NSU President Scot Harrison said there are many activities planned for the organization during the upcoming months.

NSU began the semester by holding a bake sale for all DMACC students and staff in the Bear Pit Sept. 11. Their first fund-raiser of the year was a great success, and the group plans to sponsor several more. The next event will be a Halloween bake sale Oct. 30. Cookies, cupcakes, and other Halloween goodies will be sold.

The organization recently began a monthly newsletter for NSU members. The newsletter consists of coming events, member classifieds, and stories of interest to its readers such as loans available to nursing students and notes from NSU's executive council meetings. Julie Ann Stoffel is editor.

NSU has also taken on an important cause which may help combat the nursing shortage in our state. Presently, a legislative bill that would forgive student loans of up to \$1,000 per year for up to six years for each year a graduated nurse works in Iowa is making its way into the state congress. The students have been writing letters as an organization to all of their respective congress members.

The students have also begun planning a Christmas dance for the entire student body with a tentative date set for Dec. 5. The location and entertainment for the dance are still being finalized and will be announced later as the date approaches.

In previous years, NSU has helped with community activities such as "adopting" a less fortunate family at Christmas time and bringing food and gifts for them, assisting the American Cancer Society to sell daffodils in the spring, and providing free blood pressure screening to area shoppers. These and many more projects will be done again this year.

# CLUBS

## Rotaract Club needs you

by ANGIE LANSMAN  
Staff Writer

"Join Rotaract," says Misty Spencer, president of the Boone Campus Rotaract Club. Rotaract, like many other DMACC clubs, is just getting organized for the fall season.

"We are looking for new ideas," said Spencer.

She also stresses the need for members.

Spencer, a full-time nursing and work study student, remembers how much fun she had being invited to a Rotaract activity. She believes Rotaract is more than a traditional club meeting; it is a good time!

"Rotaract is building a good relationship between the college and community," she said.

The club's activities are based on community involvement.

Rotaract activities have included can drives, visiting county homes, cleanups, and fund-raisers.

Spencer hopes to repeat these activities if more members join.

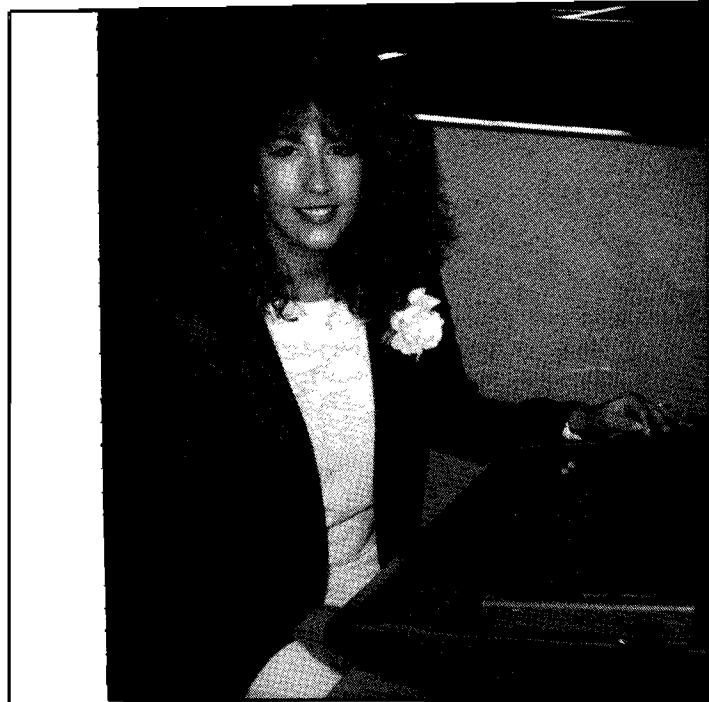
She intends to promote Rotaract by using posters and word of mouth. Hopefully, this will get the attention of students, she said.

Once members can find extra time in their schedules, an initial Rotaract meeting will be conducted.

Meeting times will be posted around the campus.

If you are interested in Rotaract, attend the next scheduled meeting to be held in the library conference room, or contact Spencer or Lee McNair, adviser.

**SHOP  
BEAR FACTS  
ADVERTISERS!**



BETH BEST

## PBLer places 6th in nation!

by ANGIE LANSMAN  
Staff Writer

Three PBL students represented DMACC - Boone Campus at the National Leadership Conference in Orlando, Fla. in July.

Those attending were Julie Nixon, Tonya Williams, Beth Best and adviser Mary Jane Green.

Best took honors for sixth place in the nation in administrative assistant typist.

Best graduated from Boone Campus last spring as an administrative assistant. She served as PBL president last year. She is currently working at Iowa State University as a campaign secretary.

Best said, "The trip was a lot of fun and the contest will always be something to remember."

Best and her husband flew to Orlando.

"The trip was also a belated honeymoon and first anniversary for us. The contest was a great experience and probably the last contest I will ever be in," said Best.

Best gives credit to PBL for her success.

"PBL is a very professional organization and helped me with my leadership skills. I believe that my leadership skills and contest experience helped greatly in getting my job," said Best.

The other two PBL members and Green boarded a state sponsored bus Saturday, July 8, for a 27-hour ride to Orlando. The group stayed in the Marriott Orlando World Center.

Nixon competed in the impromptu speaking and Williams in the business communications event.

The group attended the awards of excellence program Wednesday, July 12. Of 14 contests entered, Iowa PBLers placed in 10 of them. The State of Iowa also placed fifth in the largest percentage of increase in state chapter membership, with 28%.

The trip was a memorable event for Best and all PBL members.

## REZOOMERS welcome adult students; plan upcoming meetings on campus

The REZOOMERS Club welcomed 40 new and returning adult students with free coffee and cookies on the opening day of Boone Campus classes Wednesday, Aug. 30.

All adult students (those returning to formal education after being away for two to 20 years or more) are encouraged to attend the group's meetings.

The purpose of the organization is to provide support to all adults who are resuming their education. The informal meetings provide the opportunity to share information and get better acquainted.

Meetings are held twice monthly (the first Wednesday and the third Tuesday) in the Library Conference Room 131. Members eat lunch together (brown bag or from the Student Center), and come and go as classes permit between 11:30 a.m. and 1 p.m.

Short programs with topics of interest to the group are presented during the year. All adult returning students are encouraged to participate.

Club sponsor, Maggie Stone, from the Displaced Home-

makers Center, states, "REZOOMERS is a great way for new adult students to get acquainted. The group provides the opportunity to talk with others who are juggling school along with many other responsibilities. I encourage all adult students, both those who are new this fall as well as those who have been here previously, to attend our meetings."

October meetings will be held Wednesday, Oct. 4, and Tuesday, Oct. 17, from 11:30 a.m. to 1 p.m. For additional information, contact Maggie Stone in Room 128.

## PBL starts off a very busy semester

by ANGIE LANSMAN

Phi Beta Lambda (PBL), the Boone Campus business club, is starting the fall semester with a fund-raiser, according to Mary Jane Green, PBL adviser. Members will be selling pizzas Sept. 26 through Oct. 10.

PBL hopes to receive a good response by keeping the pizzas at a low price. Discounts will also be available depending on the number of pizzas purchased.

Single topping pizzas cost \$5.50 and include beef, sausage, Canadian bacon, and pepperoni. New this year will be the Texan pizza, similar to a taco pizza. The Texan, combination pizza, and beef and mushroom pizzas will be sold for \$6.50.

The money raised will be used for various club activities.

In other news, the first meeting was held Tuesday, Sept. 19, with new president Julie Nixon presiding. The agenda included choosing officers to fill vice president, secretary, treasurer, and historian. *The Bear Facts* will list those new officers in the next issue.

PBL will also keep busy attending conferences throughout the next two months. Iowa PBL conference will be held in Marshalltown Oct. 6-7.

The North Central Regional Conference is scheduled for Nov. 3-4 in Des Moines. Speakers for this event include Dave Arch, Michael Broome, D. Scott Friedman, and Dr. Roy Peters, Jr.

PBL members attending this regional conference can choose from these workshop offerings: Map out your career alternatives, desktop publishing options, utilizing community resources, establishing and managing your chapter, managing a successful district leadership conference, achieving balance in your life, and key elements of a successful job interview.

Looking ahead to November, PBL students will be anxious to hear Bill Reichardt. He will be visiting the campus Tuesday, Nov. 21, speaking on "Dress for Success." The event will be held in the auditorium and all students are invited to attend.

Scheduled meetings are set for Oct. 17, Nov. 7 and Dec. 5. Meetings are Tuesdays in the auditorium from 12:20 p.m. to 1:15 p.m.

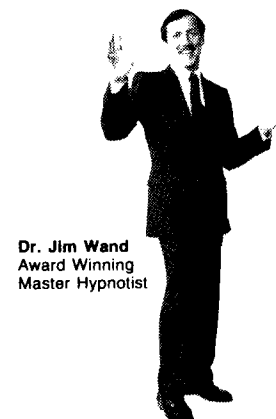
If you are interested in joining PBL, contact Mary Jane Green or any PBL member.

Look for more PBL happenings in the next issue of *The Bear Facts*.

# Jim Wand

Master

H · Y · P · N · O · T · I · S · T



Dr. Jim Wand  
Award Winning  
Master Hypnotist

Dr. Wand's presentation and stage demonstrations are informative as well as entertaining. He mixes humor with his hypnotic skills to keep the audience laughing and at the same time educates them as to how hypnosis works.

One of the top hypnotic entertainers in the nation.

If you like to laugh, you can't afford to miss this show at:

**FRIDAY, SEPT. 29  
AT NOON**  
**Boone Campus Auditorium**  
Sponsored by Student Action Board

## Teacher Feature

### Gano finds Boone Campus 'fantastic'

by ANGIE LANSMAN  
Staff Writer

A new face among the faculty at Boone Campus this fall is Barb Gano. She will be teaching nursing classes at Boone Campus.

Gano said, "Although I'm just starting out at Boone Campus, I really like it. The people are just fantastic."

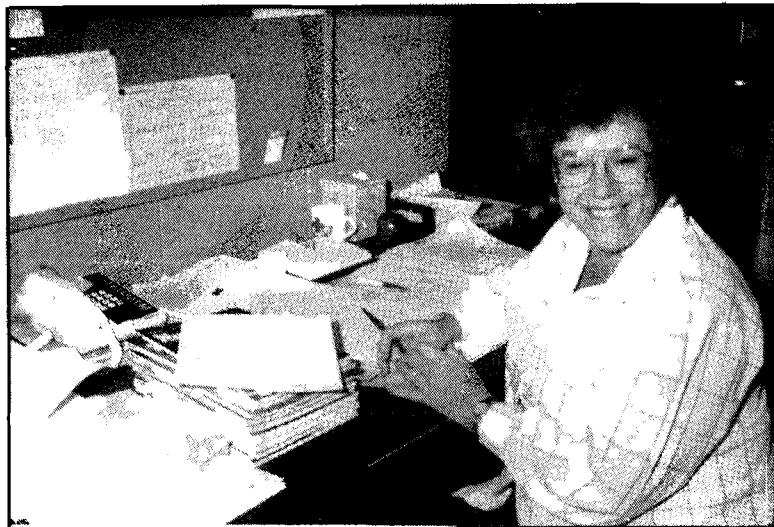
Gano remembers visiting Boone Campus last spring and said, "The Bear Facts was very helpful to me to learn about the campus."

She resides in Ames with her family. She has two children, Michelle and Michael.

In her spare time, you can find Gano spending time with her family. Gardening is also a favorite hobby.

"I love to read, but never have the time," said Gano.

Gano received a diploma from St. Joseph's School of Nursing. She also attended the University of Iowa. She has a certification in mental health nursing.



BARB GANO

Gano previously lived in Cherokee and spent many years as the director of nursing education at Cherokee Mental Health Institute.

Her short-term plans are to start working toward her masters. In the meantime, she will continue having a good time teaching at Boone Campus!

## NEWS BRIEFS

### Welcome to DMACC

DMACC - Boone Campus students, faculty, and staff enjoyed a special welcome the first day of classes, Wednesday, Aug. 30.

George Silberhorn, director of student services, grilled some of his famous hamburgers and hot dogs which were served with baked beans out of the Campus Center Kitchen for 25¢.

Assisting George were members of the Student Action Board (SAB).

The event provided a good "mixer" for students and helped ease those first day of school tensions!

### Salary increases

The DMACC board of directors approved salary increases at its Aug. 8, 1989 meeting.

The increases include 7.4% for faculty, 7.3% for classified staff, 4.5% plus \$600 for exempt and professional/technical/administrative staff, levels 17 and below, and 4.0% plus \$600 for staff in levels 18 and above.

Faculty increases became effective Aug. 19. Others were retroactive to July 1, 1989.

### ISU reps visit

Representatives from ISU's College of Business Administration will visit Boone Campus Wednesday, Sept. 27.

Contact George Silberhorn or Rich Finnestad in the office for scheduling an individual appointment.

### Party at Confetti's

A second day "mixer" was held for Boone Campus students, faculty, and staff at Confetti's in Boone, Thursday, Aug. 31.

The event provided a good chance for everyone to get to know each other and socialize!

### Hours posted

Here are the hours of some of the informational and heavily used areas at DMACC - Boone Campus.

Library: 7:30 a.m. to 8:30 p.m. Monday-Thursday, 7:30 a.m. to 4 p.m. Friday.

Bookstore: 8 a.m. to 12:30 p.m. and 1 to 4:30 p.m. Monday-Friday.

Learning Center: 8 a.m. to 8 p.m. Monday-Thursday, 8 a.m. to 3 p.m. Friday.

Campus Center Kitchen: 7:15 a.m. to 1 p.m. Monday-Friday. Office: 8 a.m. to 4:30 p.m.

### Hypnotist to appear

Jim Wand, master hypnotist, will entertain at DMACC - Boone Campus Friday, Sept. 29 at noon in the auditorium.

Wand's presentation and stage demonstrations are informative as well as entertaining.

He mixes humor with his hypnotic skills to keep the audience laughing and at the same time, educates them as to how hypnosis works.

If you like to laugh, you can't afford to miss this show!

Wand's show is sponsored by SAB.

### Wheels for Life

## BIKE-A-THON

Date: **Sat., Sept. 30**

Place: **Hilton Coliseum Parking Lot, Ames**

Time: **9 a.m. to 1 p.m.**

Coordinator: **Kelly Lough**

To benefit **St. Jude Children's Research Hospital**  
Memphis, Tenn.

Sponsor forms available in Bill Alley's office, Room 122, or phone 432-7203 or 233-3201.

**SUPPORT THE BEARS!**

**SHOP BEAR FACTS ADVERTISERS!**

**GOLDEN CORRAL**

### NEED MONEY?

Golden Corral needs part-time day or night help in all positions. We have flexible hours to fit your schedule. Please apply in person to: **ALAN HALLBERG**

HOURS: Sun.-Thurs. 11 a.m. to 10 p.m.  
Fri.-Sat. 11 a.m. to 11 p.m.  
515-432-7399

1312 S. Story St., Boone, IA 50036