

# The Bear Facts

Volume XVII Issue 5

Des Moines Area Community College, Boone Campus

Feb. 6, 1989

## Homecoming is a success

by TARAK ABBASI  
Staff Writer

The 1989 Boone Campus Homecoming party and dance were held Thursday, Jan. 25 at the Boone Elks Lodge.

Almost 300 people were in attendance for the festivities which kicked off at 8 p.m. and lasted until midnight.

Presentation of the 1989 Homecoming royalty and the naming of the king and queen were the highlights of the evening.

Rob Logan was named Homecoming king, while Jennie Gibbs became the 1989 Homecoming queen.

The remaining members of the royal court were: Jill Bauer, Carla Stumbo, Marilyn Cason, Jim Heese, Chris Heikes, Mike Elbert, Amy Warnock and Jeff Bjerke.

Jennie Gibbs, of Boone, is the daughter of Vern and Marge Gibbs. She is a liberal arts major and plans to further her education at a university. Jennie's hobbies include bike riding and being with friends. She believes it is easier to get to know many people at DMACC because it is smaller.

Rob Logan is the son of Jim and Judy Logan from Ankeny. While at DMACC, Rob participates in baseball and served as intramural Ping-Pong and pool champ. He says Boone Campus students are very nice, and he has made many friends. Rob is majoring in business and plans to continue his education at Iowa or Iowa State Universities.

Amy Warnock, of Humboldt, is a liberal arts major. She is the daughter of Toni and Tracy Warnock. At DMACC, she has participated in the fall play, SAB and *The Bear Facts*. Amy also had the honor of being graduation marshal and received a two-year scholarship. Meeting her closest friend and roommate, Jill Bauer, and getting personal attention from teachers is what she will remember most about DMACC. Her favorite activities are golf, music and walking. She plans on attending a state university.

Mike Elbert, of Ankeny, is the son of Bill and Ruth Elbert. Mike plays baseball at Boone Campus and also served as in-



## 1989 Homecoming Court

The 1989 Homecoming royalty included, in front: Amy Warnock, Jennie Gibbs, Marilyn Cason, Jill Bauer, and Carla Stumbo. In back:

Jeff Bjerke, Rob Logan, Mike Elbert, Jim Heese and Chris Heikes. Photo by Lori Burkhead

tramural Ping-Pong champ. He is a liberal arts major. His future plans are to attend Iowa University or University of Northern Iowa and major in criminology. Mike has made good friends while at DMACC. Baseball, water skiing and surfing are a few of his hobbies.

Jill Bauer, of Bagley, is a liberal arts major. She is the daughter of Gene and Linda Bauer. Jill works in the admissions office and says the faculty is very helpful here. She enjoys shopping, water skiing and watching movies. Jill had the honor of being graduation marshal and a recipient of two scholarships. Hotel-restaurant management will be her major when she attends Iowa State University.

Jeff Bjerke, a liberal arts major, is from Clark, South Dakota. His parents are Jim and Sharon Bjerke. Jeff's activities at DMACC include playing baseball and basketball. He enjoys getting to know every-



KING ROB LOGAN

QUEEN JENNIE GIBBS

one at Boone Campus. He also likes fishing, snow skiing and horseback riding. Jeff will be majoring in physical education with a minor in coaching at Northwest Missouri State.

Marilyn Cason is the daugh-

ter of Mary Cason. She is from Des Moines and is majoring in liberal arts. Marilyn plays basketball at Boone Campus. Friendly people and smaller classes are what she likes most about DMACC. In her free time, she likes to have fun playing tennis, softball and basketball. Marilyn will go to a four-year college and might continue playing basketball.

Jim Heese is a business administration major. His parents are Burt and Marge Heese of Earling. Jim plays basketball at DMACC, admires Boone and has fun at Boone Campus. He plans to go to a four-year college and graduate with a business degree. His hobbies are golf and tennis.

Carla Stumbo, of Ogden, is the daughter of Jerry and Marilyn Stumbo. She is a business major and plans to transfer to Iowa State University in accounting. Carla was involved in cheerleading and work study in *The Learning*

Center. She thinks Boone Campus is a plus for smaller classes and friendly people.

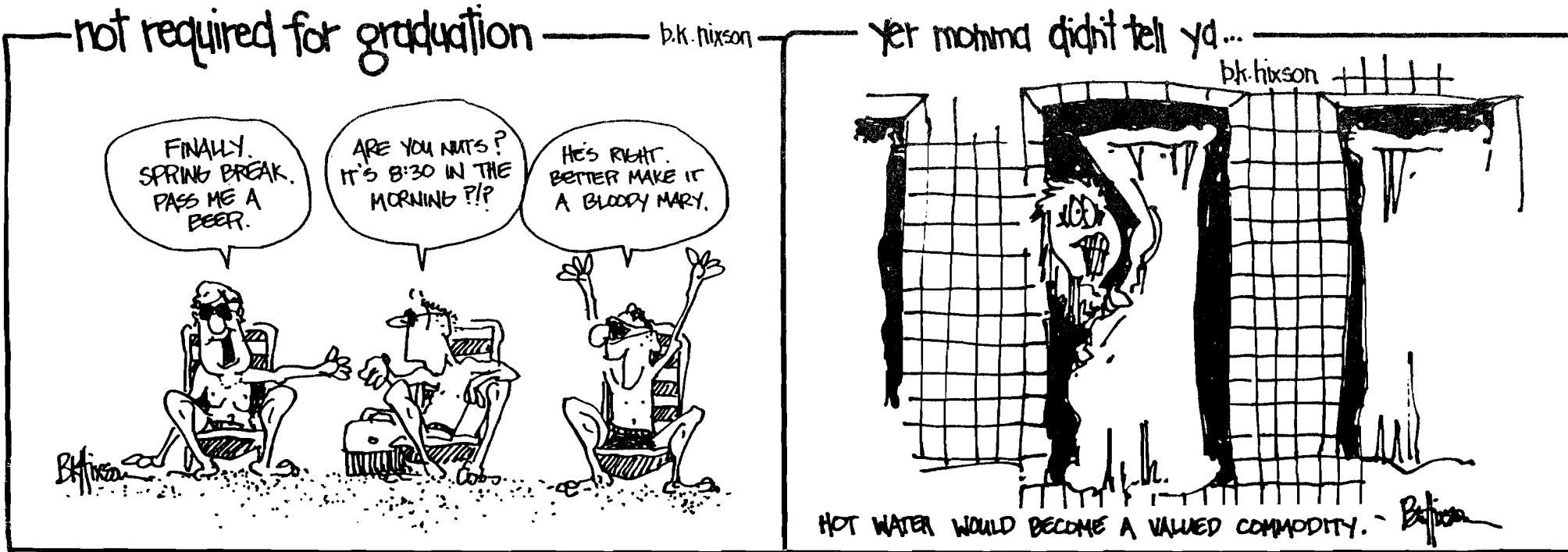
Chris Heikes is a liberal arts major from Adel. His parents are James and Marilyn Heikes. Basketball and SAB are the activities he participates in at Boone Campus. Chris likes Boone and the friendly students. In his free time, he enjoys golf. Chris plans to further his education.

Dancing seemed to be the most popular activity of the evening. Music was provided by Craig Lee of Q-102.

There was also a snack table set up by the Student Action Board. Many people seemed to be enjoying the pizza that was served. A cash bar was also available.

Lisa Miller, a Boone Campus student who attended the dance, said, "I thought everyone really had a good time. It seemed like most everyone was up and dancing, and jamming to the beat."

# COMMENTARY



## What would make your Valentine's Day special?

by **TARAK ABBASI**  
Staff Writer

With Valentine's Day just around the corner, several Boone Campus students were recently asked what would make Valentine's Day special for them.

Here are their responses:

**Stephanie Wilson:** To spend the day with Matt and maybe go out and do something special, just us.

**Jill Thornton:** A big white teddy bear with a big red bow, holding a dozen roses.

**Jennie Gibbs:** The strip and go naked party with Darin B.

**Darin Bohn:** Not having class, and the strip and go naked party.

**Sandy Christensen:** Out to supper with my husband (no kids), then to a movie.

**Kenny Jones:** Having a romantic dinner with my girl, and a bubble bath.

**Barry Hardy:** A nice, slim, beautiful woman.

**Lisa M. Sching:** Get a Mickey Mouse watch.

**Deanna Bugely:** Have a nice

quiet night with the one I love.

**Toby Kruse:** Buy Susie a dozen roses.

**Susie Calonkey:** Buy Toby 12 lbs. of chocolates.

**Moe Moen:** To get the woman of my dreams and caress her for as long as possible. Yes. I want that woman, and you know who you are. Will you be mine?

**Raphael Garlinghouse:** To show that special someone that she is that special someone by getting engaged.

**Teresa Campbell:** To get anything from Steve.

**Darin Vote:** Waking up with a brunette named Dawn, and a bright red Kramer guitar by my side.

**Patrice Geisler:** A dozen roses from somebody special.

**Kris Eschliman:** Winning the lottery and spending it with my girlfriend in the Caribbean.

**Gloria Renz:** Spontaneous romantic excitement.

**Laurel Capps:** Getting a dozen long-stemmed roses from my boyfriend.

**Maria Fernanda Angel:** A smile.

**Marsh Miller:** Being alone with Alan, without any interruptions, for a whole day.

**Sherry Sargent:** Spend a great evening with my significant other.

**Bernice Kitt:** A knight in shining apparel on a motorcycle.

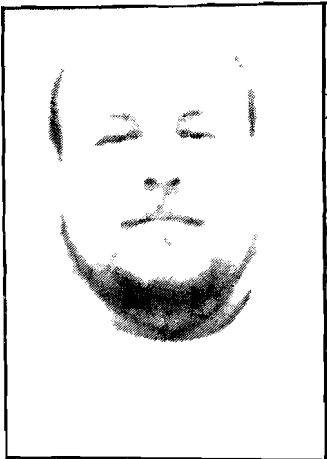
**Sheri Klemmer:** Playing a mean game of pool with a shark.

**Tarak Abbasi:** To find my one and only true love.

# CAMPUS VIEW

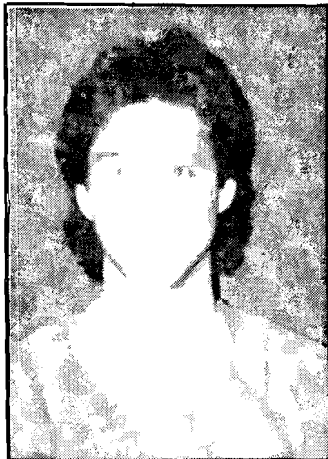
by **TARAK ABBASI** and **TRACEY HERRICK**

**QUESTION:** What should the goals of President George Bush be?



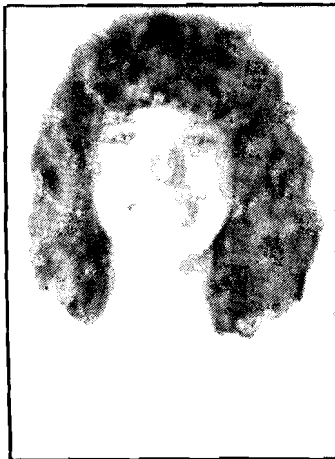
**RICK CONRAD**

To help the homeless and reduce the national debt. To get tougher on countries that have a tariff on our goods.



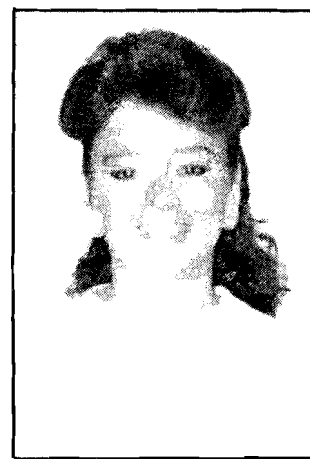
**MICHAEL SILLS**

Lower the trade deficit and put stronger environmental protection laws into effect against industrial business.



**B.J. DANIELS**

Lower taxes; we do not need them raised any higher.



**DAWN ANDERSON**

Lower the deficit, lower taxes, and stop spending so much money on nuclear weapons.



**MR. MOE SWASS**

Lower the deficit and taxes. Cut down on drugs in city streets.

# COMMENTARY

## Maybe Iowa isn't so bad after all!

by ROB HOOK  
Editorial Page Writer

"I can't wait to get out of this state" and "This place is a joke" are comments I have recently heard around campus.

Why are so many people displeased with their current environments?

Why do we want to leave our home state for a totally different place?

The answers vary, and they are answers only we as individuals can come up with.

I could only answer that question after leaving my Iowa home for a time.

My destination in 1985 was San Jose, Calif. I packed as many suitcases as the airline would allow and placed the rest of my life's belongings in boxes for future shipping.

Upon my arrival at the San Jose International Airport, I heard a pleasant voice say, "Welcome to San Jose. The current temperature is 82 degrees." I had to smile to myself, knowing I had just left a state enduring sub-zero weather.

On the way to my friend's house, which was to become my home for the next three years, I admired the palm trees and the Spanish grandeur of the local homes. This was the first of many impressions I received of San Jose. Not bad, right? Read on!

Another first impression, and perhaps the first disappointment I experienced, was the beach. It was very crowded, with only a few bare spots gleaming in between beach

towels and bodies.

After finding a spot, I decided to "soak up a few rays," only to experience a few moments later something warm and runny splattering on the back of my leg. I had been victimized by a seagull on my first day at the beach!

Okay, fine, so I thought I would just hop into the ocean nonchalantly to wash it off. The water was shockingly cold! I decided to submerge my entire body by going out a little further when a huge wave seemed to come from nowhere and the undertow sucked me out much further than I had desired to be. After dragging myself to the shore again, and after much humiliation, we headed home. Welcome to California!

Of course, there were serious moments. Some friends and I went walking through a park after work late one night, only to discover we were on one of the local gang's "turf." We ended up fleeing for our lives -- getting away with our bodies intact, but our car without windows.

And then, there's the cost of living. Paying \$780 a month rent for a two bedroom townhouse can be a bit extreme when finances are not good. Keep in mind minimum wage is \$4.25 an hour. Although many jobs start higher to create some type of balance. Paying \$6 to see a movie that turns out to be bad can be a bit frustrating at times, too.

But seriously, folks, I'm not saying California is a bad place.

In fact, I may find myself back there again someday. However, I do feel wherever there is a high population, there is also racism and violence, and people have a whole different attitude. California just happens to be a prime example and an experience of these traits for me.

Adaptability plays a large role in such experiences. One place that seems right to one person may not be right for another. But to get to the moral of the story, the next time you curse your home and current lifestyle, seriously think about what you're saying and what you're contemplating. Change is good, and in fact necessary. But just be prepared for the consequences when you go to extremes because the glitter truly does fade.

## What New Year's resolutions have you kept so far?

by TARAK ABBASI  
Staff Writer

Along with a New Year usually comes a host of New Year's resolutions made by many of us to try to improve ourselves and our lives.

Several Boone Campus students were recently asked what 1989 resolutions they made and if they had stuck to them.

Here are their responses:

**Kenny Jones:** Keep chasing girls!

**Barry Hardy:** Keep rising.

**Deanna Bugely:** To accom-

plish school.

**Lisa M. Schling:** Get good grades.

**Rick Coriad:** To find a woman.

**Toby Kruse:** Not to cheat on my income taxes.

**Susan Calonkey:** To help Toby cheat on his income taxes.

**Roslyn Gunnink:** To turn people in when they cheat on income taxes.

**Moe Moen:** To never lose touch.

**Sherry Sargent:** Not to make

New Year's resolutions.

**Sandy Christensen:** To grow personally.

**Marsha Miller:** Get better grades.

**Bernice Kitt:** To never play baseball again.

**Sheri Klemmer:** Drawing a peace sign on a local monument.

**Tracey Herrick:** Never to make another resolution.

**Tarak Abbasi:** To never do another student comment poll for as long as I live!

SUPPORT  
THE BEARS!

## Redeker's Used Furniture Clearance

An excellent selection of used furniture traded in on new purchases.

Come in now!

Take advantage of the savings.

Free delivery.

On the south edge of Boone

## See a detective movie this semester!

by TRACEY HERRICK  
Co-editor

Boone Campus students have the opportunity to see 10 more movies free of charge this semester, thanks to the "America in the Movies - Detective Film" class.

Kay Mueller, instructor, said all interested Boone Campus students may join her weekly class during the first two hours to view the movies, as long as seating is available.

The class is held Wednesday evenings in Room 208.

Again, there is no charge if students would like to view these detective films. Here is a film schedule for the remainder of the semester:

Feb. 8: *Charlie Chan on Treasure Island.*

Feb. 15: *The Maltese Falcon.*

Feb. 22: *The Thin Man* (1934).

March 1: *The Big Sleep* (1946).

March 8: *The Big Sleep* (1978).

March 15: *Murder on the Orient Express.*

March 22: Spring break.

March 29: *Tightrope.*

April 5: *Gorky Park.*

April 12: *Chinatown.*

April 19: *The French Connection.*

April 26: *Murder by Death.*

A story pertaining to a DMACC writing contest being held in conjunction with this detective film series may be found elsewhere in this issue of *The Bear Facts*.

## VALENTINE'S DAY WILL SOON BE HERE!

Remember that special someone in your life  
with Flowers from Denise's!

Stop by or call today.  
509 Story - Boone - 432-2028

Denise's  
Floral



# Boone Campus gears up to host professional actors' production of 'Oedipus Rex,' Feb. 16



## Scene from "Oedipus Rex"

Jocasta, at right, is pleading with Oedipus to go no further into his search for his identity in this scene from the National Shakespeare Company's production of "Oedipus Rex." The company will perform this

Greek drama at Boone Campus Thursday, Feb. 16 at 8 p.m. Director is Elaine Sulka. See story for details. Photo by Tom Brazil provided to The Bear Facts

Hey, Boone Campus students and faculty!

Instead of munching out on popcorn in front of the tube while watching "Knot's Landing," doing your laundry, or grading that never-ending stack of papers, why not grab a friend and join others from in and around Boone County for an evening of culture, Thursday, Feb. 16, right here at Boone Campus!

The National Shakespeare Company of New York City will perform the timeless Greek drama, "Oedipus Rex," Feb. 16 at 8 p.m. in the Boone Campus auditorium. A reception will be held in The Campus Center following the 1½ hour performance.

You won't want to miss this rare opportunity to see a national group of professional actors perform in Boone as part of a Boone Campus sponsored event!

The group's one-night appearance in Boone is part of its U.S. tour.

Reserved, limited seating is available, so you must act now to reserve seats. Tickets are priced quite reasonably, with the students in mind. Tickets are \$3 for students and \$5 for non-students. You may reserve and make payment for tickets in the main office.

This event is being coordinated on Boone Campus by George Silberhorn, director of

student services, and Kay Mueller, drama and speech teacher. Publicity is being handled by Jill Burkhart, journalism instructor.

Silberhorn said he thinks the performance is a positive step toward including the community in Boone Campus events.

"I hope many people from the community, as well as students, join us for this event," he said.

Mueller said this is indeed a rare opportunity for students.

"I hope Boone Campus students take advantage of this opportunity to see professional actors from New York City perform on stage in Boone," she added.

"Oedipus Rex" was written by Sophocles in approximately 430 B.C. The timeless tragedy has survived as one of the most powerful Greek dramas. The story tells of a man who unknowingly murders his father and marries his mother.

The National Shakespeare Company's artistic director, Elaine Sulka, directs this performance of "Oedipus Rex." The production is performed by the NSC's 12-member acting ensemble.

The National Shakespeare Company was created in 1963 by Philip Meister, a New York producer and director, and Sulka. The company tours coast-to-coast during its September to May season.



THE BEAR FACTS is the official student publication of the Boone Campus of the Des Moines Area Community College. The staff welcomes suggestions and contributions, which should be submitted to the editor. The newspaper is published nine times a year and is distributed free to the students, staff and friends of the school.

REPORTERS: Angie Brelsford, Lori Burkhead, Mike Elbert, Tracey Herrick, Michelle Lynch.  
PHOTOGRAPHERS: Tarak Abbasi, Lori Burkhead.  
ADVISOR: Jill Burkhart.

BOONE CAMPUS, DMACC  
1125 Hancock Drive  
Boone, Iowa 50036

SUPPORT THE BEARS!

- Weekend buffet (all you can eat)
- Friday and Saturday late night breakfast buffet

• Breakfast anytime



1703 S. Story St.

OPEN 24 HOURS

• Full menu

• Fast service

## Alumni Assoc. scholarships

by LORI BURKHEAD  
Staff Writer

The DMACC Alumni Association has made scholarships and grant awards totaling \$6,000 to several DMACC students for the spring term.

Those receiving scholarships and grants from Boone Campus are:

- Alenia Oslund, ADN, recipient of a \$300 grant.
- Thomas Irlbeck, nursing, \$300 scholarship.
- Andrea O'Lena, administrative secretary, \$300 scholarship.

Funds for these annual awards are raised through the DMACC Alumni Challenge Phonathon and resulting contributions from alumni.

# CAMPUS LIFE

## Student Spotlight

### Darin Vote stays busy as part of 2 A.M. Band

by ANGIE BRELSFORD  
Co-editor

Boone Campus has a number of talented students, one of whom happens to be a rising musician!

Darin Vote, Boone Campus sophomore, is lead guitarist and manager of the rock band, "2 A.M."

"The band started about three years ago when I was a junior in high school," Vote said.

Vote is a 1987 graduate of Cedar Valley High School and is originally from Farnhamville, Iowa.

He said that a high school teacher helped him with the idea of starting a band.

"I talked to some friends and 2 A.M. was started," Vote said.

The band has changed members since high school. Vote and four new members currently make up the band. Together, these talented musicians are getting attention from across the state.

Last summer proved to be very productive for 2 A.M. They opened for noted bands such as Steppenwolf, Humble Pie and The Litterer Band.

"We also played for an audience of 6,000 at the Humboldt Freedom Rally," Vote said.

He added, "These were some of the most memorable times for the band."

The band performs in a number of nightclubs in central



Members of the 2 A.M. Band are, from left: Boone Campus student Darin Vote, T.J. Peterson, Doug Mitchell, John Esdohr and Jeff Vander Maten.  
-Photo provided

Iowa. It seems to be gaining popularity with reservations filling up into May.

Besides playing in the band, Vote manages to handle 19 credit hours. His classes this spring include: American history, management supervision, photography, ethical problems, environmental conservation

and human sexuality.

Vote says he tries to get homework done by Thursday because he is busy all weekend.

"I usually don't go to school Friday because of traveling and setting up to perform that night.

"I have studied everywhere. I have even studied in hotels for

finals," he added.

Squeezing in time for the band practice is very difficult. Vote said the members live in different towns, so it is hard to find time.

He said, "I try to pick up my guitar every day."

One thing Vote is positive of is the band's future. He has

high goals for the coming years.

"I would like to see the band cut a demo tape and start writing more original songs," he said.

The band is also considering the possibility of making a video.

He will certainly get help from his parents, Bill and Eloise Vote.

Vote commented, "My parents have supported me greatly and are involved in and supportive of the band. If 2 A.M. is playing in the area, they will come and listen."

With a busy schedule, Vote still has a few weekends off to visit friends.

"The most rewarding part is going back to my high school area and playing. I see the people who gave us a hard time when we first started, and now I see them enjoying themselves," Vote said.

There will probably be more and more rewarding experiences for Vote and the band 2 A.M. in the near future.

If you haven't heard the tunes of 2 A.M., make a date to do so. Here are some of the group's evening performance dates:

Carroll at the Carroll Teen Center, Saturday, Feb. 11.

Eagle Grove at the Mainstream Lounge, Friday and Saturday, Feb. 17-18.

Creston at the Twilight Zone, Friday and Saturday, Feb. 24-25.

## Coming Events!

by TRACEY HERRICK  
Co-Editor

WEDNESDAY, FEB. 8—  
Ash Wednesday.

THURSDAY, FEB. 9—

A financial advisor will be on campus from 9 a.m. to noon. Place TBA.

TUESDAY, FEB. 14—

Happy Valentine's Day!

THURSDAY, FEB. 16—

The National Shakespeare Company of New York City will perform the Greek drama, "Oedipus Rex," at 8 p.m. in the Boone Campus auditorium. A reception in The Campus Center will follow. Reserve your ticket in the main office today!

MONDAY, FEB. 20—

A financial advisor will be on campus from 2 to 5 p.m.

## Drama dept. present 'A Tomb with a View'

by ROB HOOK  
Staff Writer

"A Tomb with a View" by Norman Robbins has been chosen as the spring production at the Boone Campus to be performed March 3-4 at 8 p.m. in the auditorium.

This comedy-thriller involves 10 characters, composed of four men and six women, ranging from a beautiful nymphomaniac to a mad scientist who does experiments in the laboratory. Other characters include a relative chained in the basement who thinks he's a werewolf and another family member who enjoys poisons and burying bodies in the garden.

As the family awaits the reading of the will, more and more characters die until, in the final act, there are more deceased characters than living!

The third act promises to be very interesting, as the twisted plot unfolds and the surprising conclusion is revealed.

The cast for this production includes Tom Hope as Penworthy, Rob Hook as Peregrine Potter, Tracey Herrick as Dora Tomb, Sherri Klemmer as Emily Tomb, Mary Rhodd as Anne Franklin, Bernice Kitt as Agatha Hammond, Kaylynne Hoppe as Freda Mountjoy, Ted Hawkins as Lucien, Tarak Abasi as Marcus and Jodi Mentzer portraying Monica Tomb.

The play will be directed by Kay Mueller.

Watch for more details about "A Tomb with a View" in the next issue of *The Bear Facts*.

**DMACC**  
DES MOINES AREA  
COMMUNITY  
COLLEGE

SUPPORT  
THE BEARS!

Virginia's  
Flowers

For the best selection in town,  
stop by

- Roses
- Carnations
- Fresh arrangements
- Balloons

*We have the perfect gift  
for your Valentine!*

702 Keeler — Boone — 432-5325

# SPORTS

## Lady Bears illustrate their potential for winning

### Bears vs. Simpson

The Lady Bears basketball team lost a heartbreaker to the Simpson ladies' team, 66-65, at the Boone Campus auditorium Thursday, Jan. 12.

Allen led the scoring attack for the Lady Bears with 24 points, including 10 first quarter points. In addition, Marilyn Cason contributed 15 points and Shari Mosman tossed in 12.

Although the Lady Bears came up short, their performance illustrated the potential for winning they do possess.

### Lady Bear Statistics Boone Campus vs. Simpson

(Free throws not reported.)

Allen - 24, Hoversten - 8, Bunger - 2, Cunningham - 2, Mosman - 12, Roth - 2, and Cason - 15.

### Lady Bears vs. Iowa Lakes

Next, the Lady Bears traveled to Iowa Lakes Jan. 14 to plummet the Lakers, 82-63.

Marilyn Cason showed her offensive prowess by scoring 23 points, along with Cori Allen who added 22. In addition, Hoversten and Mosman added 11 and 10 points, respectively.

### Lady Bears Statistics Boone Campus vs. Iowa Lakes

Allen - 22, Cason - 23, Mosman - 10, Hoversten - 11, Bunger - 6, Clark - 6, Roth - 3 and Cunningham - 1.

### Bears vs. Kirkwood

The Lady Bears traveled to Kirkwood Wednesday, Jan. 18 only to lose 98-46 due to near perfect shooting by the Kirkwood women.

The scoring was contributed by all eight of the Lady Bears, with Cason leading the scoring with 12, followed by Hoversten who tossed in eight points.

### Lady Bears Statistics Boone Campus vs. Kirkwood

Cason - 12, Hoversten - 8, Roth - 7, Allen - 7, Mosman - 4, Clark - 4, Bunger - 2, and Cunningham - 1.

### Lady Bears vs. Iowa Central

The Lady Bears won their second game of the season, 79-73, in the Boone Campus auditorium against the Lady Tritons of Iowa Central Saturday, Jan. 21.

The Lady Bears rallied around Marilyn Cason's impressive performance that included 12 third quarter points and 31 total points. Cori Allen remained a consistent double-figure scorer with 20 points, and Jennifer Hoversten scored 10 points in the contest.



Lori Allen was successful in this effort for two points. The Lady Bears won in this bout against Iowa Central. -Photo by Lori Burkhead

### Lady Bears Statistics Boone Campus vs. Iowa Central

Cason - 31, Allen - 20, Hoversten - 10, Roth - 7, Clark - 6, Bunger - 3, and Mosman - 2.

### Lady Bears vs. Waldorf

The Lady Bears met Waldorf Wednesday, Jan. 25 at the Boone Campus auditorium and lost the Homecoming contest, 59-53.

Allen looked great with 10 first quarter points and 24 total points. Mosman added 10 with Cason contributing nine points.

The Lady Bears have had moments of excellence, but it seems their record of 2-11 needs improvement.

Cason commented, "I think we could have played better in some situations during the season."

The Lady Bears have nine regular season games to prepare for tournaments.

### Lady Bears Statistics Boone Campus vs. Waldorf

Team statistics are as follows (free throws not reported):

Allen - 24, Mosman - 10, Cason - 9, Clark - 7, Hoversten - 2 and Trotter - 1.

## MEN'S BASKETBALL

### HOME

Feb. 8..... Council Bluffs 8:00  
Feb. 15..... Clarinda 7:00  
Feb. 18..... Clinton 8:00  
Feb. 22..... Indian Hills 7:00

### AWAY

Feb. 11..... Creston 8:00  
Feb. 13..... William Penn J.V. 8:00  
Feb. 25..... Ellsworth 8:00  
Mar. 3.. Region XI Tournament TBA  
TBA  
Mar. 4.. Region XI Tournament TBA  
TBA  
Mar. 5.. Region XI Tournament TBA  
TBA

## WOMEN'S BASKETBALL

### HOME

Feb. 8..... Reames 6:00  
Feb. 18..... Reames 6:00

### AWAY

Feb. 11..... Creston 6:00  
Feb. 13..... William Penn J.V. 6:00  
Feb. 25..... Ellsworth 6:00  
Mar. 2.. Region XI Tournament TBA  
TBA  
Mar. 3.. Region XI Tournament TBA  
TBA  
Mar. 4.. Region XI Tournament TBA  
TBA

BILDEN'S

**SAV-MOR Drug**

Serving Midwest Families For A Century

Phone 432-1304

804 Story St.

Boone

"We support the BEARS"

**Gillespie**  
Pontiac-Olds-GMC

1600 S. Marshall St. - Boone - 432-5221

**Hawkeye Federal Savings Bank**

Complete  
BANKING SERVICES  
DRIVE-UP FACILITIES  
24-HOUR AUTOMATIC  
TELLER MACHINE

### MAIN BANK HOURS:

Monday - Friday ..... 9:00 a.m. - 4:30 p.m.  
Thursday ..... 9:00 a.m. - 6:00 p.m.

"A TRADITION YOU CAN BANK ON!"

8th and Arden / Boone

432-1220

Member FSLIC

**Hy-Vee**

**Lots of Little Differences  
— You'll Like!**

931 8th Street - Boone  
432-6065

# SPORTS

## Bears still searching for first victory

by MIKE ELBERT  
Sports Writer

The Boone Bears basketball team lost its first game of the second semester, 70-59, to an impressive Simpson junior varsity squad at home, Thursday, Jan. 12, at the Boone Campus auditorium.

Coach Larry Hughes commented, "We should have actually won this game, but our free throw shooting was affected due to the long layoff without practice over Christmas break."

In illustration, the Bears only made one of eight shots from the charity stripe, a disappointing 12%.

Hardy was the leading scorer, pumping in 21 points. He also crushed the boards with 14 rebounds and stole three balls while blocking two shots. Oglesby contributed 15 points, three assists, two rebounds and three stolen balls. Next in line was Heese who scored 11 points with one assist, two rebounds, and four stolen balls. Jones, Hughes, and Moen closed out the scoring with six, four and two points, respectively.

### Bear Statistics

#### Boone Campus vs. Simpson

The figures after each player's name indicate field goals made, free throws made, and total points.

Hardy 10-16 1-4 21, Oglesby 7-10 0-1 15, Heese 5-9 0-1 11, Jones 3-7 0-2 6, Hughes 2-11 4, Moen 1-5 2, Maystadt 0-1 0, totals 28-59 1-8 59.

Three-point goals: Heese 1, Oglesby 1.

Fouled out: Jones, Oglesby.

The Boone Bears are still having a hard time finding the winning side of the scoreboard, as they draw nearer to regional tournaments.

### Bears vs. Iowa Lakes

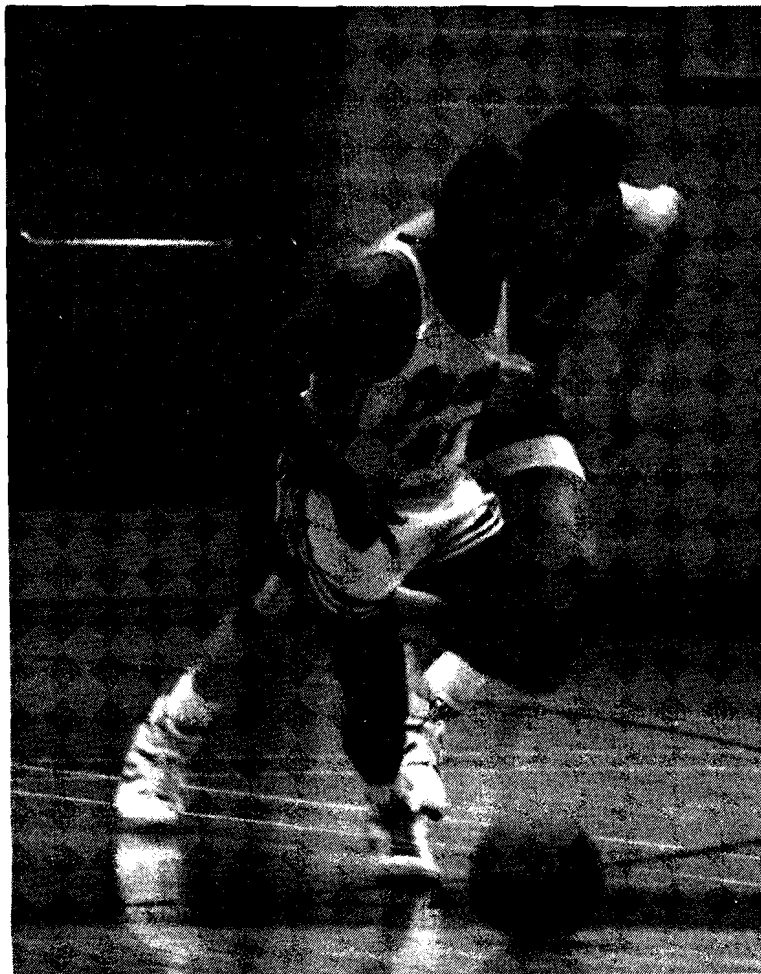
The Boone Bears basketball team dropped its second straight loss of the spring semester, 97-73, on the road to Iowa Lakes Saturday, Jan. 14. "The turnovers really hurt us in this game," commented Coach Hughes.

The Bears turned the ball over 31 times in the contest and forced only eight turnovers from the Lakers.

"This should never happen to us because we are a guard-oriented team," added Hughes.

The leading scorer in the contest was Jeff Hughes who pumped in 20 points with two assists, four rebounds and three stolen balls. Next in line was Hardy with 17 points, one assist, seven rebounds, and one stolen ball.

Oglesby contributed 16 points with four assists, five rebounds, and two stolen balls.



Derrick Oglesby races to retrieve the ball in the game against Iowa Central. -Photo by Lori Burkhead

### Bear Statistics

#### Bears vs. Iowa Lakes

Hughes 7-11 6-8 20, Hardy 6-15 5-7 17, Oglesby 7-10 2-4 16, Jones 3-9 0-2 6, Maystadt 1-2 2-2 4, Heese 1-2 2-2 4, Bjerke 1-4 0-0 3, and Heikes 1-3 1-2 3.

Three-point goals: Bjerke, Hughes.

Fouled out: Heese and Hardy.

### Bears vs. Kirkwood

The Bears traveled to Kirkwood Wednesday, Jan. 18, only to lose a high scoring shootout, 96-94, in a valiant effort to gain their first seasonal victory.

Hardy was unstoppable as he poured in 33 total points and pounded the boards for nine rebounds. The rest of the score came as a result of great teamwork, as Gross scored 16 points, Oglesby 14, Heese 12, Hughes 10, and Jones, Moen, and Johnson, four, three, and two points, respectively.

### Bear Statistics

#### Boone Campus vs. Kirkwood

Hardy 12-17 8-9 33, Gross 7-16 2-2 16, Oglesby 7-15 0-0 14, Heese 5-8 0-0 12, Hughes 4-8 0-0 10, Jones 1-2 2-2 4, Moen 1-2 1-2 3, and C. Johnson 1-1 0-0 2.

Three-point goals: Hughes 2, Hardy 1, Heese 2.

Fouled out: Jones, Hughes, and Oglesby.

### Bears vs. Fort Dodge

The Boone Bears fell to Fort Dodge, 83-61, in a disappointing loss plagued by 25 Boone turnovers, Saturday, Jan. 21 at home.

Leading the scoring charge for the Bears was Gross with 14 points followed by Hardy with 13 and Oglesby with 11.

### Bear Statistics

#### Boone Campus vs. Fort Dodge

Gross 5-15 4-4 14, Hardy 4-9 5-6 13, Oglesby 3-5 5-5 11, Heese 1-6 4-4 6, Hughes 3-5 0-1 6, Johnson 0-2 4-6 4, Bjerke 1-3 0-0 3, Jones 1-3 0-1 2, Moen 1-1 0-0 2.

Three-point goals: Bjerke.

Fouled out: None.

### Bears vs. Clarinda

The Bears traveled to Clarinda Monday, Jan. 23, and lost their fifth straight game of the spring semester, 86-81.

Hardy again led all scorers with an outstanding contribution of 31 points. Hardy also snared 10 rebounds, stole two balls, and blocked one shot.

Heese was next in line with 15 points. Moen and Jones came through with four assists apiece and Johnson contributed five rebounds and four stolen balls.

### Bear Statistics

#### Boone Campus vs. Clarinda

Hardy 11-20 9-11 31, Heese 7-9 1-2 15, Hughes 3-6 2-2 9, Oglesby 3-7 2-2 8, Johnson 3-7 0-1 6, Gross 2-11 2-4 7, Bjerke 1-6 0-0 3, and Jones 0-2 2-2 2.

Three-point goals: Bjerke, Hughes and Gross.

Fouled out: Jones, Heese and Oglesby.

### Bears vs. Waldorf

The Boone Bears basketball team jumped out to a quick start against Waldorf Jan. 25, leading by as many as 15 points in the first half, only to lose 92-83 in its Homecoming contest.

Barry Hardy came through with 19 points, three blocked shots, six rebounds, two assists and two stolen balls. Derrick Oglesby added 15 points, six assists, eight rebounds, and five stolen balls. In addition, Carl Johnson tossed in 14 total points and snagged nine rebounds.

Although the Bears have yet to win a game, they have proved they are worthy of much more than their record indicates.

Jeff Bjerke commented, "I think we could be a lot better if we could slow the ball down in some situations. However, I believe we play all our opponents respectably."

### Bear Statistics

#### Boone Campus vs. Waldorf

Hardy 9-18 1-3 19, Oglesby 6-9 3-6 15, Johnson 4-7 6-7 14, Gross 6-16 0-0 12, Heese 4-10 0-1 9, Jones 3-3 0-0 6, Hughes 1-7 1-2 3, Bjerke 1-3 0-0 3 and Heikes 1-1 0-0 2.

Three-point goals: Bjerke.

## Unusual writing contest is under way

by TRACEY HERRICK  
Co-editor

Boone Campus students are invited to join in the fun and competition during the DMACC district-wide detective fiction writing contest.

The contest is being conducted to help promote the spring film series, "Sleuthing for America: The Detective Film," and to celebrate our own student super sleuths, according to Rick Chapman, Ankeny Campus English/film teacher.

The Ankeny Campus Student Action Board will sponsor the prizes including \$100 for first place and \$50 for runner-up.

### Guidelines

- Length: No more than 1,500 words per story. Entries will be published in the Ankeny Campus *Chronicle*.

- Number: Only one entry per writer.

- Awards: Only one prize per entrant.

- Manuscript guidelines: Stories must be typed, double-spaced, on 8½" x 11" paper. Include writer's name, program, phone number, and address.

- Submission deadline: Mid-term, Tuesday, March 7.

Judging will be conducted by *Chronicle* student readers who can each vote by selecting a favorite story and signing a ballot published with the stories. One ballot per student. Signed ballots should be returned to the main office.

(The detective film series class is being conducted at Boone Campus also. To see when films are being shown, see separate story in this issue.)

## Try your luck at the great Bear shoot!

The Boone Campus cheerleaders are co-sponsoring a new activity this year with Domino's Pizza — a hoop shoot contest during halftimes of home games.

Anyone interested in participating should sign up at the gym door, according to Jinny Silberhorn, cheerleader advisor.

Basketball players, if it's not during their game, retired coaches, kids, tired parents, and teachers are all eligible to sign up.

At halftime of the women's game, one name will be drawn to shoot; two names will be drawn during halftime of the men's game.

Those lucky fans whose names are drawn will start at the first shooting station and shoot until they miss.

Prizes are as follows:

- First station, lay-up, small pizza.
- Second station, free throw, medium pizza.
- Third station, three point circle, large pizza.

Placing a name in the ballot box more than once each game will cause forfeiture of prizes.

The program from the basketball game will entitle fans to \$1 off any pizza after the game at Domino's.

So come to the next home game, support your team, and win a pizza!

DMACC - Boone Campus

VALENTINE



LOVE



NOTES

Compiled by  
TRACEY HERRICK

**Blonde:** Remember, I'm always here for you! Happy Valentine's Day - I love ya! Deny.

**Bert:** One day at a time, together we can grow. I love loving you. B.B.

**Mark:** To a wonderful guy that I hope to get to know better. I love you! Lisa.

**Marsha:** Wouldn't have made it without you! Happy Valentine's Day. Bliss.

**Pig Lips:** You are the love of my life! Sue Bee Honey.

**Blondie:** You're the best roomie anyone could have! Happy V-Day. Love ya. Deny.

**Carla Condon:** Happy Valentine's Day! Love, John.



**Vern, Craig, Mark, Susie, James, John, Ted, Roz:** I love my spades pals. Janann.

**Fib and Mish:** Happy V-Day, gals. I just wanted to say thanks again! Love ya! Blondie.

**Janann:** Happy Valentine's Day. Ted.

**Metal Head:** Happy V-Day, babe! V.H. rocks! "Why am I talking like you?!" Blondie.

**Vern Fleshman:** Had a great time at camp! Ernest.

**Boone Bear Cheerleaders:** Happy V-Day! Thanx for all the fun times. It's been a great year! Blondie.



**Jeff:** You're very special to me, and I love you with all my heart! Monica.

**Don:** Happy Valentine's Day. Wish you were here. Miss you tons! Heather.

**J.M.:** You are my funny Valentine, sweet, comic, Valentine. Happy Valentine's Day, Babe! C.C.

**To the guy with the spiky hair on Comse 181 (11:15):** Don't be so shy! I'm friendly! PEE-WEE.

**Mike:** Happy Valentine's Day. Thanks for being there. Heather.

**Kimberly:** Happy Valentine's Day, dear roommate! You're still special to me! Rob.



**Deb, Deb:** Happy V-Day! Be a good girl this year for once (snort, snort)! Dino.

**Monica:** I love you because you're so special and you're you! Your one and only lover.

**Andy Goldsworthy and John Heinz:** Love ya, Andy. Thanks for being a friend. Clink.

**Randy:** To the greatest guy, I will always love you. Missy.

**The Football Gang:** Happy Valentine's Day (snort, snort)! We love Deer, poo poo. Deny.

**D.L.:** "Going to the Chapel." Can't wait 'til July 29th! Love you! A.B.



**R.A.J.:** A Valentine wish for my husband-to-be. I will love you forever. Love, S.O.M.

**Ken Willis:** Would love to know ya better. Secret Admirer.

**Tarak:** Who said you wouldn't get a Valentine? Love ya, California-boy! Love, ME!

**Clink:** Happy V-Day! Here's a hug for you; remember, I'm always here for ya! Deny.

**Craig:** We love you, baby. US. Ted Hawkins: We love you lots, babe! Us.



**B.F. Staff:** Thanks for having your stories done on deadline! J.B.

**Marilyn Jepson:** We miss ya! Hope you enjoy this issue 'cuz it's for you! The staff.

**Swift Elk and The Dark One:** Happy Wampa-Wampa Day. Your two favorite squaws.

**Scotty:** Have a Happy Valentine's Day - I'll be thinking of ya! Deny.



**Lee:** The lottery numbers are 42, 17, 13, 3, 1, 23. Good luck! Remember us!

**Doreen:** Next time, don't let the pipes freeze. Put some fire in the furnace! Us.

**Rosie:** A nurse, a horseback rider and an exotic dancer, too! What a woman! Us.

**Ma:** Have a day filled with "Bliss." The code word is "Brothers." Imagine that! Guess who.

**Jill:** You've proven what a true "friend" is! I love ya lots. Amy.

**Bliss:** I hear you're a Cyclone! Are you still a Hawkeye at heart?! Marsha.

**Mom and Dad:** You're the people I've always loved! HVD! The Middle Kid.

**Al, Cameo and Logan:** Don't let the King Boxelder getcha! Or the mice and bats!

**Roy:** UR 2 FAR 4 ME 2 CU. Hurry back! Your Iowa Girl.

**Beaster:** Welcome to DMACC. You're now a Boone Bear! Is your name really Chuck? Guess who!

**Kitchen Crew:** O'Brien's will never forget us! Thanks for the laughs. Wet jeans.

**Ma:** You're my bridge over troubled water. Thanks for being there! The kid.

**Adam:** 2 Y'S UR, 2 Y'S UB, 2 Y'S IC, UR 4 ME! Angel Eyes.

**Boone Campus students, faculty, staff:** Have a Happy Valentine's Day! B.F. Staff.



**Sue Bee Honey:** I love you, baby. Piggy.

**Heather:** You are a very interesting, special, neat, nice, intelligent woman. Happy Valentine's Day. M.G.

**Bernice:** Happy V-Day, Roomie! Love ya lots, "snort, snort!!" Blondie.

**Michelle L.:** Happy Valentine's Day! You're a great help and a good friend. Thanks. Carla.

**Ketchup and Buck:** Happy V-Day to a couple of real sweethearts. Love ya lots! Blondie.

**John:** You can put a hole in my waterbed anytime. Honey.

**Dana:** Even if your room's a mess, I cleared a spot for you in my heart. M.O.M.

**Kay:** Four years! You deserve a medal! "Hot Tales."

**Jodi and Jill:** H.V.D. U-N-I should be friends! Love, Amy and Jill.

**Amy:** Sunshine of our days, life of our parties - don't ever change! "All of Us."

**Doughnuts:** You can buy our books back anytime! Do you really love lettuce and cottage cheese?!  
**Matt:** Hope your dream comes true playing first string on the "Scumbuckets." M.O.M.  
**Sandy:** I hear FIFTY is NIFTY! Smile and enjoy it! The Snack Bar.  
**Vicky and John:** Forget stress and chill out!!! Warm up in Hawaii. Love, Amy.

# CLUBS

## NSU gears up for activities

by ANGIE BRELSFORD  
Co-editor

Nursing Students United is looking forward to getting spring term activities under way, according to President Pat Triska.

Triska said NSU students have been busy with the start of the new semester and have not yet conducted a meeting this month. The club plans to schedule a meeting soon.

Triska described December as a busy and fun month for all Boone Campus students.

Specifically, NSU was involved in the Salvation Army's "Adopt a Family Program." The group was in charge of a less fortunate family. They purchased toys for children and supplied canned goods and money certificates for a special Christmas dinner.

NSU also celebrated Christmas with a potluck dinner, followed by singing carols.

"We sang at nursing homes in Ogden, Boone, and Ames.

"There was a very good turnout, and everyone had a good time," she added.

If you are interested in joining NSU, see Triska or stop by the nursing office.



## The Bear Facts Staff

Members of the spring semester Bear Facts staff are in front from left, Rob Hook, Tarak Abbasi, and Mike Elbert. In back,

Angie Brelsford, Lori Burkhead, and Tracey Herrick. -Bear Facts photo

## Financial aid advisor here

Students who have specific questions or who want more information about various forms of financial aid may want to attend one of the financial aid seminars scheduled this month.

Chris Carney, Boone Campus business office, said a financial aid advisor will be on campus Thursday, Feb. 9 from 9 a.m. to noon, and Monday, Feb. 20 from 2 to 5 p.m.

For more information, see Carney in the office.

**SUPPORT  
THE  
BEARS!**

## Spring enrollment is up 10% here

by ROB HOOK  
Staff Writer

Enrollment for the spring semester set a new Boone Campus record, with 815 students in attendance. This beats the previous record of 799 students last semester and is a 10% increase from last year.

Reasons for this increase in enrollment range from DMACC being economical, to better publicity of DMACC in central Iowa.

The biggest factor, however, is due to "an increase in non-traditional students," according to Boone Campus Dean Kriss Philips.

Non-traditional students include people who work full time and are returning to school to better their education, older people who have raised families and are now taking advantage of the opportunity to return to school, and part-time students who have not yet decided exactly what they want to do.

The overall success of DMACC students and successful transfer programs to the other state universities also plays an important role in attendance, Philips said.

Another plus is the economical cost of education at any of the four DMACC campuses.

## REZOOMERS may be for you

Attention, all adult students (those returning to formal education after being away for two to 20 years or more): The REZOOMERS CLUB is for you!

The purpose of the group is to provide support to all adults who are resuming their education. The informal meetings provide the opportunity to share information and to get better acquainted.

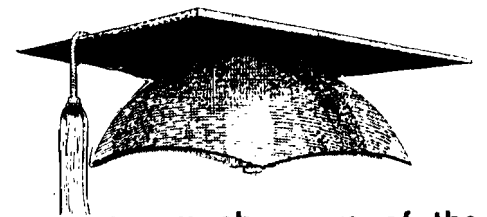
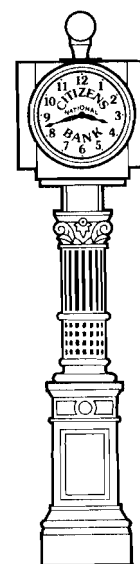
Meetings will be held in Library Conference Room 131 twice monthly (the first

Wednesday and the third Thursday). Members eat lunch together (brown bag or from The Student Center), and come and go as classes permit between 11:30 a.m. and 1 p.m.

Short programs with topics of interest to the group are presented. All adult returning students are encouraged to participate.

For additional information, see Maggie Stone, Room 128, in the Displaced Homemakers Center.

**Here's the most expensive hat you'll ever pay for!**



We are very much aware of the value of a college education. We also are aware of the cost.

See one of our officers soon about your education. That expensive hat may be cheaper than you think.

**Citizens National Bank**

724 Story Street • Boone, Iowa 50036 • (515) 432-7611  
and 725 Shakespeare • Stratford, Iowa 50249 • (515) 838-2426  
FAX Number (515) 432-9915  
Member FDIC and Hawkeye Bancorporation ®

## FREE CATALOG

of Government Books  
Send for your copy today!

For a free copy of this catalog, write—

Free Catalog

P.O. Box 37000  
Washington, DC 20013-7000

**HUNTER'S 66  
Convenience Store  
and Car Wash  
1616 S. Story St. - Boone  
OPEN 24 HOURS**

# Fall semester wrap-up

## Christmas dance, cheer squad auction, and kids' party are all successful

by ANGIE BRELSFORD  
Co-editor

It was a very busy time around DMACC - Boone Campus at the end of fall semester.

The Boone Campus Christmas dance, the DMACC kids' party, and the cheer squad auction were all events which took place during the final few weeks of classes.

Here is some follow-up information regarding all of these events.

### Christmas dance

The Boone Campus Christmas dance turned out to be a success, according to those students attending.

Many students gathered at the Elks Lodge Dec. 8 to dance the night away.

Music was provided by Randy Hohl, disc jockey, whose program included a big screen TV, fog machine and incredible speaker and lighting systems.

Photos at the dance were taken by Ensley Photography of Ogden. Photos should be available soon.

Canned goods were collected for admission and contributed to Rotaract's food drive.

The dance was funded by SAB, with help that night from various clubs.

### Kids' party

Approximately 87 children participated in the DMACC kids' Christmas party, Thursday, Dec. 15.

Mary Jane Green, PBL advisor and organizer of the party, said she had additional help from six clubs, including PBL, NSU, Rotaract, SAB, *The Bear Facts*, and The Recreation Club.

Activities for the kids included stringing popcorn and cranberries, making Christmas cards and paper ropes, decorating cookies, and others.

Following the activities, door prizes were given away.

"Between 50 and 75 prizes were given away from about 16 area businesses," said Green.

Following the party, children were served punch and cookies.

"Hopefully, it will become an annual event," Green said.

She added, "It went very smoothly with no hitches. I was overwhelmed with the enthusiasm shown by the student organizers. We felt it was well attended for the first year."

### Cheer squad auction

The annual cheerleading auction was held in The Campus Center Dec. 7. According to Jiny Silberhorn, advisor, approximately \$300 was raised at the auction.

The profits will be used for new uniforms as well as sack lunches for the basketball teams later on this month.

Toby Kruse, DMACC student and auctioneer, sold many items donated from various local businesses.

Silberhorn added, "We sold new and old items."

The cheerleading squad was responsible for handling the donations of merchandise from local businesses.

Some of the auction items were: a sheepskin, basketballs, old cheerleading uniforms, tanning sessions, hair permanents, sweatshirts, logo signs, food certificate and others.

"There was a very good turnout," Silberhorn added.

The cheer squad thanks each local business that donated items to be auctioned.



Boone Campus faculty, including Larry Hughes, p.e./coach, left, and Kay Mueller, speech/drama, right, are among those socializing at the Boone Campus Christmas party held Dec. 8 at Elks Lodge. -Bear Facts photo



The kids are busy with projects while Boone Campus students look on.



This was the scene at the DMACC kids' party held Dec. 13 at Boone Campus. The event was coordinated by Mary Jane Green and six Boone Campus clubs. See story for details. -Bear Facts photo

# Freedom of the Campus Student Press Month is celebrated

Freedom of the Campus Student Press Month, a national observance which began in 1983 to focus attention on the desirability of a free student press, was celebrated on several college campuses in January.

The *Bear Facts* staff, in an attempt to remind students and faculty about the importance of freedom of speech and of the press, exhibited a poster near *The Bear Facts* room on second floor in commemoration of student press month.

The poster explained how students are also guaranteed the rights found in the First Amendment and the 14th Amendment of the U.S. Constitution.

The First Amendment states: "Congress shall make no law respecting an establishment of religion, or prohibiting the free exercise thereof; or abridging the freedom of speech, or of the press; or the right of the people peaceably to assemble, and to petition the government for a redress of grievances."

The 14th Amendment guarantees that no state make or enforce any law which would abridge the privileges guaranteed to the people of the United States.

In observance of Campus Student Press Month, here are summaries recapping attempts at censorship of the college press during the 1987-88 school year as reported in "Student Press Law Center Report."

## Libel

1988 was a quiet year on the libel front for college media. The "Student Press Law Center Report" published only three accounts of libel suits being litigated against college media, and two of those were dismissed early in the process.

However, one libel suit resulted in a \$10,414 judgment against the *Vulcan News*, the student newspaper at the University of Hawaii-Hilo. David Purcell, a former dean at the school, won the suit because a story allegedly contained false information about a confrontation he had with a female student.

Student newspapers fared much better in the other two libel suits. A New Jersey Superior Court judge dismissed a \$1.7 million libel suit against the *Kean College Independent* for a 1985 parody issue.

Ann Walko, an assistant dean of education at Kean, claimed she was libeled in a satirical advertisement for a phone fantasy service that listed her name, along with names of other school staff members.

The "advertisement" said, "Call Whoreline at 687-SEXY any time for good phone sex featuring Janice Murray, Ann Walko, Steve Guttmann, Matt Lynch."

Judge Barbara Byrd Wecker dismissed the suit in July, rul-

ing that no reasonable person could take the parody ad seriously.

The dismissal of a libel suit against *The Lion's Voice*, the student newspaper at Dowling College in Queens, N.Y., is being appealed.

The suit was filed by Jerome Epstein, a former professor, after the newspaper published a letter and an editorial critical of his teaching methods.

The New York Supreme Court dismissed the suit because "the statements set forth in the letters are constitutionally protected as expressions of opinion."

Epstein's attorney, Joseph Pierini, said his client is appealing the dismissal because "accusing a teacher of refusing to sign withdrawals, and then flunking the students who requested to withdraw, is not expressing an opinion, it is accusing him of a cruel act."

## Censorship by Theft

A novel form of censorship - theft of free-circulation newspapers - occurred with frustrating frequency in 1987-88. Although school administrators aren't directly involved in such means of preventing distribution of information, how they react to such behavior can be indicative of attitudes toward censorship.

Here are two examples of censorship by theft:

Staff members of the *Daily Lobo* at the University of New Mexico were angered last March when 4,000 copies of their newspaper were stolen the day they endorsed candidates for student government.

"It's obvious that the papers were stolen because somebody couldn't handle the endorsements," said editor Mike Kemper, a reporter at the time of the incident.

Kemper said an investigation into the incident by the university's dean of students did not find enough evidence to charge anyone with the theft.

Four Clemson University students trailed the student newspaper's distribution manager on his rounds. They snatched up bundles of the *Tiger* and stashed them in the trunks of their cars.

The group said they wanted to protest what they perceived was the paper's neglect of minority affairs.

Marcus Moore said his plan was to hold the papers hostage for a few hours, then return them amidst a flurry of media attention, the point having been made.

However, the campus police caught them during the heist.

## Censorship

Since the U.S. Supreme Court's decision in *Hazelwood v. Kuhlmeier*, those concerned about student press censorship on college and university cam-

pus have wondered if administrators would use *Hazelwood* as an excuse to try and censor student journalists. Although it is still a little early to make a judgment, university student publications continue to face censorship threats, and at least part of the problem has to do with the *Hazelwood* decision.

So far this school year, the Student Press Law Center has received over 350 calls from student journalists complaining about censorship.

Summarized here are instances of threats of or actual censorship reported by the SPLC since the *Hazelwood* decision:

A lesbian student group and the University of Iowa have settled a lawsuit stemming from the university's refusal to print the group's magazine.

Duane Rehovit, attorney for the students, said both sides in the case have agreed to keep the terms of the settlement secret. He called the agreement an "economic settlement" and said that it did not address the issue of the university printing service's regulations on sexually explicit photographs.

The original suit charged in part that the refusal of the school's printing services to publish the group's quarterly magazine violated its First Amendment rights.

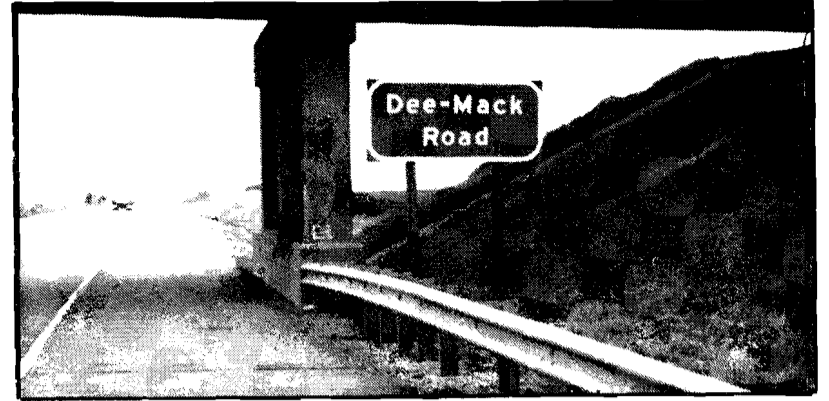
The university's Lesbian Alliance, a non-profit group that is allowed to use university facilities because it is a recognized student organization, claimed that the summer 1986 issue of its arts and literary magazine was first accepted and later rejected for publication by a printing services employee because of a photographic series depicting females engaged in "sexual activity."

University officials initially claimed that the material was legally obscene, but that claim was later retracted.

The issue in question, including both pictures and text, was eventually printed by a private firm after a publication delay of two months.

The suit, filed in May 1987, contained three separate counts, including charges of breach of a contractual agreement and a tortious interference with business interests as well as the First Amendment claim.

In another instance, students at Pima Community College in Tucson, Ariz., have changed the focus of their news coverage to include more stories on controversial campus issues. And they say that decision did not set well with some members of the school's board of governors, one of whom proposed that the *Hazelwood* decision could be used to control the content of the campus newspaper.



Can you name the city and state where this sign is located? If you would like to guess, simply write down your answer and place it in the specially marked box in the office. The winning entrant will win a dinner for two, compliments of SAB. Deadline for entries is Tuesday, Feb. 14. The winner will be announced in the Feb. 27 issue of *The Bear Facts*.

**DMACC**  
DES MOINES AREA  
COMMUNITY  
COLLEGE

Stop by the  
**BOONE CAMPUS  
BOOKSTORE**

for all your school supply needs!

Monday - Friday from 8 a.m. to 4:30 p.m.

## FOUR REASONS NOT TO USE SMOKELESS TOBACCO.



**DIPPING IS FOR DIPS.**  
DON'T USE SNUFF OR CHEWING TOBACCO

AMERICAN  
CANCER  
SOCIETY

## Boone Co. Daffodil Days

March 18 - 21

**\$4 for 10 flowers**

Order from Connie Booth or nursing students  
by TUESDAY, FEB. 28

Flowers will be available for Palm Sunday, if requested  
Proceeds go to cancer education, prevention, research

## Teacher Feature

### Christman's goal: Achieving the best for students

by LORI BURKHEAD  
Staff Writer

Rich Christman is the subject of this month's Teacher Feature article.

Christman is the newest full-time member of the Boone Campus faculty, having started spring semester. His courses include composition and literature.

Christman says he enjoys the small college atmosphere at Boone Campus.

"The students and faculty are extremely friendly and very helpful. I couldn't think of a better place to be teaching," he said.

Christman is a writer as well as a teacher. He has written fiction and non-fiction, and his work has been published in newspapers and magazines throughout the country. He has also written a book of short stories about the events of the Vietnam War.

One of Christman's goals is to promote and increase interest and opportunity in the arts at Boone Campus and in the Boone area.

For instance, he is planning a course on fiction and films of the Vietnam War. He would also like to begin a fiction and poetry reading series as soon as



RICK CHRISTMAN

possible. This series would include the writing of both students and professionals.

Christman's hobbies include writing, reading, music, movies, travel and theater.

Christman received his bachelor's degree from the University of Wisconsin, a master's degree from Mankato State University, and his doctorate from Drake University.

## NEWS BRIEFS

### Lost and found

Boone Campus students are reminded there is a lost and found box in the main office.

If you have lost anything during this school year, you may want to see if it has been turned in.

You must describe the item you have lost before claiming it, according to Paula Trowbridge, dean's secretary.

### Evening counselor

Boone Campus students attending classes during the evening hours only are reminded there is a counselor available to you.

Mrs. Ivette Bender is on campus to answer any questions you may have or help you out in any way.

Watch for details about this new service offered to evening students in our next issue.

### Hours

For your convenience, hours of various areas on campus are listed below.

The Learning Center: Monday-Thursday, 8 a.m. to 8 p.m.; Friday, 8 a.m. to 3 p.m.

The Library: Monday-Thursday, 7:30 a.m. to 8:30 p.m.; Friday, 7:30 a.m. to 4 p.m.

The Bookstore: Monday-Friday, 8 a.m. to 12:30 p.m., and 1 to 4:30 p.m.

The office: Monday-Friday, 8 a.m. to 4:30 p.m.

### Letters to the editor

The Bear Facts welcomes your opinions on various subjects for our editorial page.

You may write a letter to the editor and place it in The Bear Facts mail box in the office.

Letters must be signed. Please include your phone number and area of study.

### SUPPORT THE BEARS!

### Farm institute spring events

by GARY STASKO  
Holst Institute Director

The Holst Farm Management Institute, housed at Boone Campus, is sponsoring many events during spring semester.

An Ag Outlook Symposium will be held Thursday, March 9. This will be a one-day informational meeting in which speakers will make presentations to area farmers and agribusiness people on current agricultural issues and the commodity price outlook.

The meeting will be followed by a meal.

Speaker for the symposium will be Harry Hillaker, Iowa's state climatologist, who will update the group on the drought.

Everyone is invited to attend. A charge of \$6 per person will cover part of the costs to sponsor the event.

It is hoped the Ag Outlook Symposium will become an annual event.

The second annual Chicago trip will be taken March 19-21, during the first few days of spring break.

The trip will be similar to last year's, with visits to the Chicago Board of Trade, the Chicago Mercantile Exchange, and other points of interest in downtown Chicago.

The group will stay at the Congress Hotel on Michigan Avenue. Cost per person for transportation and hotel is \$85 (double occupancy).

A third event sponsored by the Institute will be a beginner level course on microcomputer applications for the farm/agribusiness, but a date has not yet been determined.

Anyone with questions about any of these events may contact Gary Stasko in the teachers' office on second floor next to the elevator.

## Grand View COLLEGE

"At Grand View the classes are small and the teachers are always willing to give extra help," says sophomore human services major Denise Acker. Sophomore Tony Lisle, a radio/tv major, agrees and says, "You get hands-on experience in your first semester of college."

For more information about the 22 bachelor's degree programs, contact Grand View College, 1200 Grandview Ave., Des Moines, Iowa. Call 1-800-372-6083.



Haircare Design-Cut Specialists  
For Men and Women

california  
concept

CINDY WATSON  
Owner

826 Story St  
Boone, Iowa 50036

HOURS: M,T,W,F - 9 to 4:30;  
Th - 9 to 6, Sat - 9 to 4:30.

432-8906

## Radio Shack

DEALER

### Tandy® 1000 HX with MS-DOS Built-in

Now only

**\$499**

ONLY IN BOONE

HOURS:

M-F: 9 to 8

Sat.: 9 to 6

Sun.: Noon to 5

1306 S. Marshall  
Boone — 432-7746



Reg. 699.00  
Monitor extra

The first PC compatible desktop computer with MS-DOS built-in! Includes a 720K 3 1/2" disk drive, MS-DOS, GW-BASIC and Personal DeskMate™ 2 software. #25-1053 MS-DOS/TM Microsoft Corp.