

THE BEAR FACTS

VOLUME 8

Issue 1

Oct. 3, 1980

8 pages



THE DRAMA DEPARTMENT OF DMACC, Boone Campus, will present the three-act comedy "Bull in a China Shop" by G. D. Gilford on Friday, Oct. 17 at 7:30 p.m. in the college auditorium. Although the play is a comedy of great fun, it was first published in Ellery Queen's Mystery Magazine and then selected for inclusion in the anthology Best Detective Stories of 1957. When it was performed as one of the "Alfred Hitchcock Presents" television series, the cast featured Estelle Winwood, Elizabeth Patterson and Dennis Morgan. The Boone Campus cast will include Kerin Springer, Lynn Norley, Jodi McElwee, Sandi Johnson, and Tim Orr all of Boone; Brian Jones and



Tony Thornburg of Ogden; Christine Shedd of United Community, Kevin Israil, Ron Bunting, and Beth Christianson of Ames; Jean Golightly of Booneville. The comedy involves a group of six ancient females in a boarding house who plot to entice the handsome homicide detective from across the street into their home. They would "stop up the sink if he were a plumber, but a homicide detective..." They are successful in getting him to arrive, but since he does not take them seriously "it is necessary to..." At any rate, "Bull in a China Shop" is a delightful comedy to be performed at the college on Friday, Oct. 17, at 7:30 p.m..

Cash awards to be offered to students

The Youthgrants program of the National Endowment for the Humanities will offer over 100 cash awards across the nation this fall to young people in their teens and early twenties, including many college and

university students, to pursue non-credit, out-of-the-classroom projects in the humanities. The deadline for submission of completed applications is November 15, 1980.

An annotated exhibition of 20th century war-time "home-front" activities in Minnesota and Wisconsin, a booklet on the history of the sheep industry in Vermont, an anthropological film about a Los Angeles Gypsy community, and a collection and

study of migrant-worker border ballads in South Texas are some of the projects undertaken by college youth.

The grants, which offer up to \$2,500 to individuals and up to \$10,000 for groups are intended primarily for those between the ages of fifteen to twenty five who have a ways to go before completing academic or professional training. While the program cannot provide scholarship support or financial aid for degree-related work, it is the only federal program which awards money directly to young people for independent work in the humanities. The humanities include such subject areas as history, ethnic studies, folklore, anthropology, linguistics and the history of art.

If you are interested Youthgrants Guidelines, Mail Stop 103-C, National Endowment for the Humanities, Washington, D.C. 20506.

Hear ERA speakers

Boone Campus students will have the opportunity to hear representatives of the ERA Coalition of Iowa speak on the upcoming issue of the ratification of the ERA, or Equal Rights Amendment to the Iowa Constitution, on Wednesday, Oct. 22.

Speaking for the Iowa ERA Coalition will be Vicki Herring, from the Attorney General's Office, and Lucille Anderson, a retired court judge.

The program will be held in Room 202 from 11 to 12 a.m.



ON THE FIRST DAY OF SCHOOL there was a noon cookout for all of the DMACC students. Hotdogs and hamburgers were provided for the meal, as was the drink. The lunch was hosted by the Boone Chamber of Commerce Ambassadors. Those ambassadors present included Elmer Ohlman, Bruce Coneon, Larry Ohge, Lennie Bloomquist, Augie Pietzmeier, Ray Duffee and A.J. "Toche" Terrones. (Photo by Kathy Abel).

'Chopin Lives' to Boone Campus

by MARCIA MATT

"I must confess...I am very nervous," stammered the pianist as he wiped his brow with a handkerchief.

Such was the opening statement of Frederic Chopin—alias Robert Guralnik—in the Sept. 23 performance of "Chopin Lives" held in the Des Moines Area Community College auditorium.

The life story of the composer was told by Guralnik to a nearly filled auditorium. The program was a musical account with spoken interludes.

Guralnik recounted the childhood days of Chopin in Poland; his adult life in both Vienna and Paris; and his romantic relationships with a variety of women. The majority of the concert, however, was filled with the music of Chopin. Guralnik's pianistic talent fully developed the feeling of hearing the composer himself. Numerous pieces of classical music were presented during the concert—including mazurkes, waltzes, etudes, polonaises, scherzos, preludes, nocturnes and ballads.

Campus need priorities set

By KATHY ABEL

Last year the student senate set priorities for student related items which are needed here on Boone Campus. The following items are listed in priority order as decided by the Boone Campus Auxillary Committee.

Item

1. Lounge Sofas and Chairs at an approximate cost of \$1,500.00. Rationale: The furniture in the lounge is in dire need of replacement. The impression it leaves with students, parents, and the public is not positive.
2. Pool Table at an approximate cost of \$800.00. Rationale: The pool table in the lounge which is old is beyond repair.
3. Stereo Equipment at an approximate cost of \$700.00. Rationale: The stereo in the lounge has provided many years of service but needs to be replaced.
4. Intramural Softball Bleachers at an approximate cost of \$750.00. Rationale: Due to the extensive use of the ball diamonds by students, staff and the public there is need for seating. Currently people sit on the grass and on the cars.
5. Roaster/Grill at an approximate cost of \$350.00. Rationale: There is need for adequate outdoor cooking facilities for the numerous student picnics that occur during the year. In the past staff members have had to provide their own grills from home in order for these events to take place.
6. Picnic Tables (2) at an approximate cost of \$150.00, and Outdoor Benches (2) at an approximate cost of \$125.00. Rationale: There is definite need for additional outdoor seating for students during warm weather.
7. Advertising Board at an approximate cost of \$400.00. Rationale: There is a need for an advertising board

which would be located outside the main door to be used for communicating events to students, staff and the public.

8. Canoes (2), Paddles (6), and cushions (4), at an approximate cost of \$800.00. Rationale: Two of the canoes currently governed by the Recreational Leadership Program have received extensive use by all students and are beyond repair. Due to demand, student life should have two canoes.

9. Intramural Uniforms at an approximate cost of \$400.00. Rationale: It is very difficult for referees and umpires to identify team members. Playing "shirts and skins" words adequately in the mens league, however, in the womens and mixed leagues it presents a problem.

10. Resurface Tennis Court at an approximate cost of \$6,000.00. Rationale: The tennis court is used extensively by students, staff, and the public. It is in bad need of repair.

11. First Aid Kits at an approximate cost of \$25.00. Rationale: Because of the extensive use of the gymnasium during intramurals and open recreation there is need for supplies for minor injuries.

12. Cross Country Skies (2 pair) at an approximate cost of \$100.00. Rationale: There has been much demand by students to provide this activity.

* Scholarships for married students approximated at \$2,000.00.

Generally, married students do not meet the criteria for available state and federal aid. There is evidence of a need for funds for married students at Boone.

* Travel monies for students at approximately \$1,000.00. To attend educational workshops offered at other institutions.

Total cost of these proposals is at \$15,100.00.

* These two items were additions by individuals at the last employees meeting and were not prioritized by the committee.

Bill Alley, who is a representative of the Boone Campus Auxillary Services Committee, will request a vote of approval for funding these proposals at the September meeting of the Auxillary Services Committee.

The Auxillary Committee, Boone Campus, Membership consists of

1. The Dean of the Boone Campus.
2. A representative elected by the association. (This person will chair the committee).*
3. A member from the Student Senate.
4. A representative from the Athletic Department.
5. A representative from Career Education.
6. A representative from Arts and Sciences.

The purpose of this committee is to

1. Identify items that are needed at the Boone Campus and prioritize such.
2. Develop and submit proposals to the College Auxillary Committee.

*This person will also serve on the D.M.A.C.C. Auxillary Committee.

Work-Study programs designed for students

by MARCIA MATT

Financial aid is not always earned with ease. Students wishing to earn more money often work for it and here at the Junior College they are doing just that.

The college work/study program is another type of Federal financial aid awarded to students by means of the ACT family financial need forms. Eighty percent of the aid comes from federal funds and 20 percent through the college itself.

Students are selected on a "first come first serve basis," says Chris Carney of the student financial service office.

Although many students may find themselves selected for the aid, not all are able to get jobs. Carney says that there are simply not enough available positions for students or funds to cover the program.

Those students who are notified to apply for work/study positions are then selected by Carney. Positions are filled on the basis of experience in various areas and the amount of time which the student can devote to the work-program.

Those employed are paid \$3.10 an hour monthly and work a maximum of ten hours a week. Ten students of the Boone campus are currently involved. They are working in the science labs, food stands, library, intramural sports program, gymnasium and concession stands.

Carney hopes, however, to be able to utilize and finance work for between twenty and twenty-two students by the years end.

The Bear Facts is the student newspaper of the Des Moines Area Community College, Boone Campus, 1125 Hancock Drive, Boone, Iowa 50036, (515)-432-7203. The Bear Facts is a tri-quarterly newspaper and is published 9 times during the school year. The Bear Facts is distributed free to its readers. It is financed by advertising and by a portion of the student activity fund. It is published by students enrolled in DMACC journalism courses and opinions expressed are those of the individual writers, not necessarily those of the administration, faculty or majority of DMACC students.

Any letter voicing your opinions of the paper, college, or world events are welcomed. Also any stories, photographs or art work submitted will be considered for publication. Submit your works to either the Editors or the Advisor, Rosemary Westphalen.

EDITORS:	Linda Tabor Marcia Matt
SPORTS	Jeff Johnson Sharon Jones
PHOTOGRAPHY	Kathy Abel
ADVERTIZING	John Matt
REPORTER	Harry Andrews
ADVISOR	Rosemary Westphalen

William's
Walgreen
Drugs

The Place for:
School Supplies
Health Supplies
&
Gifts

Boone students Anderson supporters

By ANDREA FLESHMAN

An organizational meeting was held on Friday, Sept. 19, for "Students for Anderson." Unfortunately, it seemed not too many of us care to hear about John Anderson, the November election, or politics in general.

It seems a shame that we, as a people, know how to complain about our presidents, but don't seem to want to get involved in the process of electing them. This involves finding the right person, deeping an open mind to other choices, and finally campaigning and voting for the person of your choice.

We all seem to "cop-out" at the last minute and say, "there isn't really too much of a choice," or, "politics just isn't me." Well, my friends, it is you, and you do have a choice. Each of us can, if we want to, take our citizenship and right to vote for granted. Because, of course, it will always be there, won't it? There was a time when people died for this freedom we now take so lightly. That may sound kind of corny and down-homish, but that's the way it is.

DMACC students: Know your rights

by HARRY ANDREWS

It all shows through. Intense pride, loyalty and the power of constructive thought leadership in helping us each to do the best we can with what we have.

And who really knows what we each do have? The true depths of our own resources?

What powers of constructiveness can emerge as we each exercise our right to do right in the undertakings of our own choice both today and for years to come?

As one checks through the catalogue, we come to page 40--Students Rights and Responsibilities.

We are urged to know what appears in the catalogue, handbook and any published addendums. On page 41, it is noted that copies are available for the procedure on Student Rights and Regulations and the Judicial Process. Where can they be obtained for study?

On our campus, Rich Finnestad--Coordinator of Student Life, has copies of the six-page procedure for those who want to keep it and that fact is posted on the bulletin board.

The procedure is intended to be both instructive and constructive. It is one of those many things essential to helping make a climate where we can pull it all together through assuring protection of individual student rights as well as those of the entire college community.

Are we pulling it together constructively? One measure is discipline. How often has the procedure been used since Oct. 9, 1978? Mr. Finnestad says that in two years, only two or three times with only one case carried to Divisional Dean Harold Gamm in Ankeny, Iowa. None have gone to the Campus Judicial Board which is composed of the Dean of Student development, three student representatives, two faculty representatives and the director of counseling.

You may not realize it but only 40% of your age group (18-25) voted in the last election. I'm not saying you should vote for Anderson, Reagan, or Carter. All I'm trying to get across is that you have had the opportunity to debate, discuss, and learn about the candidates and you passes it up. Maybe it was our fault for naming the group as we did, we would have gladly welcomed the opportunity to hear from others. Even if we had changed the name, would it have made any difference?

In conclusion let me explain the fact that I was not born in this country, but came from a rather poor country where people don't have much of a choice in who runs their government. Maybe that's why I'm writing this article. One can't expect God in the White House, just a man and hopefully the right one. You get to choose, if you want. It's your country, but most important--it's your future.

Who helps campus?

by MARCIA MATT

Have you ever wondered who the people, or organizations are that help to financially support this school?

As students, we all should be aware of these groups and let them know that we appreciate them.

- . Boone Kiwanis
- . Boone State Bank
- . Boone Jaycees
- . Boone Rotary Club
- . Boone Lions Club
- . Boone Business and Professional Women
- . Boyd's Dairy Stores
- . Citizen's National Bank of Madrid
- . Fisher's Show Store
- . Mary Greeley Hospital Auxiliary
- . Hawkeye Savings and Loan
- . Herrald Rexall Drug
- . Marine Corp League
- . Merit Baking (Rober Ashbaugh Memorial Scholarship)
- . Herb Moffitt, Inc.
- . Nystrom Motors (Clifford N. Nystrom Scholarship)
- . J.C. Petersen Clothing
- . P.T.A. City Council
- . Scottish Rite Educational Foundation
- . Stark-Welin Funeral Directors
- . Sweet Adelines, Inc.
- . Mr. and Mrs. Clair Abbott
- . Dr. and Mrs. John R. Anderson
- . Mr. and Mrs. Richard Byerly
- . Mr. and Mrs. Lloyd Courter
- . Mr. and Mrs. Harold Garvey (Mary Goldthwaite and Harold Garvey Scholarship)
- . Mr. and Mrs. Gary Grosnickle
- . Mr. and Mrs. Byron Hamilton
- . Lillian Holst
- . Mrs. Verjama Hamilton
- . Mr. and Mrs. John Liepa
- . Ms. Linda Lippert
- . Mrs. Bonnie Nelson
- . Dr. and Mrs. Wayne Rouse
- . Mrs. and Mrs. Bill Ryan
- . Mr. Marvin Sturtz
- . Mr. and Mrs. Harold Johnson

New Phi Beta Lambda officers

The Boone Campus chapter of Phi Beta Lambda elected its new officers for the year at a meeting on Wednesday morning, Oct. 1

Kim Kuenzi was elected as president, Barb Michels as vice president, Sherry Roper as secretary, Nancy Tolyan as treasurer, and Andrea Fleshman as Historian-Reporter.

Attention Poets!

Want to win up to \$100 by just submitting a few pieces of poetry or verse?

International Publications
P.O. Box 44927
Los Angeles, CA 90044

Rules:

1. All entries must be original and unpublished.
2. Entries must be typed, double-spaced, on one side of the page only. Each poem must be on a separate sheet and must bear, in the upper left-hand corner, the NAME and ADDRESS of the student, and the COLLEGE attended.
3. No restrictions on form or theme. Length: up to fourteen lines.
4. Each poem must have a separate title.
5. Judges' decision will be final.
6. No entries will be returned. Winners will be notified by mail. I.P. will retain first publication rights for accepted poems.
7. Initial one dollar entry fee for the first poem and fifty cents for each additional one. No more than 10 poems.
8. All entries must be postmarked not later than October 31, and fees paid in check, cash, or money order.

National Poetry Press
Box 218
Agoura, CA. 91301

Rules:

1. Any student in junior or senior college is eligible.
2. No limitation on form or theme. Shorter works are preferred.
3. Each poem must be typed or printed on a separate sheet and must bear the NAME and HOME ADDRESS of the student, and the COLLEGE ADDRESS.
4. Entrant must also submit the name of the ENGLISH INSTRUCTOR.
5. Deadline is November 5.

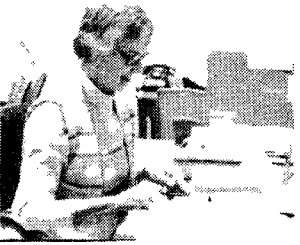
Chan's
Chinese
Restaurant

旦
現
之
果

地

1217 S. Story

How many of these members of Boone English



Mrs. Hamilton



Mr. Berge

If you are taking any English courses now or if you have in the past, then Mr. Berge is probably a familiar face to you. This is his 19th year of teaching at Boone.

His classes include Composition, Detective Fiction, and a movie class. Mr. Berge puts great importance on the use of textbooks and giving individual attention to his students. He feels quizzes are helpful when the subject includes memory work.

When you walk out of his class at the end of the quarter he hopes you have a better reading ability and a high vocabulary.

To some students his classes may be difficult, but the benefits will last a lifetime.

Music

The Des Moines Area Community College choir will once again be under the direction of Jan Betten. Rehearsals will now be held on Tuesday evenings, however. Why? Well, Jan is also teaching Boone grade school music classes, as well as working in the Junior High music department at The Boone Junior/Senior High School.

The DMACC choir has already attended the Clonin Lives concert on Sept. 23 and will be attending a showing of A Chorus Line, in Ames, Iowa, on Nov. 6.

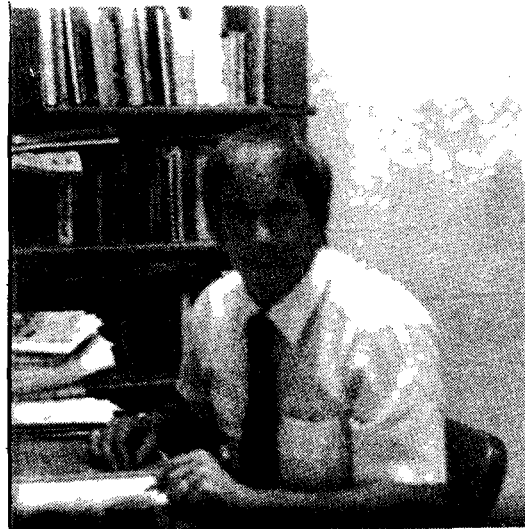
Various singing engagements have also been scheduled for the group during the year.

Do you know who teaches Literature of the Bible, two sections of Composition I and two sections of Composition II? Well, the answer is Mrs. Hamilton. She has been teaching at Boone since January of 1966.

She expects a great deal of writing to be done in her composition classes. Mrs. Hamilton doesn't give too many quizzes because she feels it takes up too much class time that could be used for better things.

The thing she wants to accomplish in her composition classes is to teach the students how to think and organize their thoughts so they are able to put them down on paper. She wants her literature class to get a better appreciation of a body of literature so they can interpret life and understand the experiences of others.

Mrs. Hamilton will be teaching Intro. to Literature and Composition One, Two, and Three next quarter, so if you plan on taking one of these courses you will know what to expect from her.



**Mr. Alley
Recreation**

Mr. Bill Alley supervises the recreational department. He must teach several classes plus take the recreation students on countless trips to conventions and internships.

His classes include Intro. to Recreation Services, Social Recreation, Group Leadership, Outdoor Recreation, Intro. to Ther. Recr. Services, Campus Recreation, Arts and Crafts, Recreational Games and Sports, and many supervised field experiences.

Photography

Newspapers, radio programs, and television shows...these are all instruments of the mass media. They are also the topics of discussion for the Introduction to Mass Communication course as taught by Bob Person.

Bob is also the instructor for the Photography classes.

In past years, he was also the advisor for the school paper. This year he will be devoting more time to his other classes and allowing another to assume his prior duties.



**Cindy Pio
Psy/Soc**

Cindy Pio is important to DMACC for her fine works in the Dept. of Psychology. When Cindy isn't challenging the pinball machine or space invader game, she teaches General Psychology, Educational Psychology, Developmental Psychology, Abnormal Psychology, Social Psychology, and Human Sexuality.

Cindy's Human Sexuality class has struggled through much controversy in the past years, but has grown to become one of the easiest filled classes in the dept.

Clair Abbott leads the way to great adventures in the sociological field at DMACC. Mr. Abbott is a graduate of Storm Lake, was once Dean of DMACC, and was Vice-Principal of Boone High.

Mr. Abbott keeps himself busy with instructing Introduction to Sociology, Urban Sociology, Social Issues, Marriage and Family, and Cultural Anthropology.

Baseball coach, Accounting I, II, and III, Business Law, Income Tax, Intermediate Accounting, and Intro. to Business instructor is Mr. John Smith.

OSCO DRUG

For A Variety of
Needs Including
Prescription drugs

North of Campus on Story

804 STORY
432-1304



Private Stock Winery

926 Eighth Street
432-8348

So says the VA... HALF HITCH
by Hank Ketcham

VETERANS ADMINISTRATION HOSPITAL

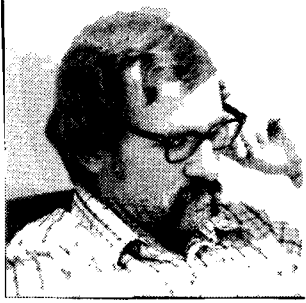


"DIDN'T EVEN HAVE TIME TO GET INTO MY CIVVIES BEFORE I MET THAT MARINE."

Contact nearest VA office
(check your phone book) or
a local veterans group.

One Campus faculty do you know?

History



Mr. Liepa

Mr. John Liepa teaches history at DMACC. His class offerings include Western Civilization 1450 to 1815 A.D., Western Civilization 1815 to Present, US History beginning to 1840, US History 1840 to 1900, and US History 1900 to Present. One class of particular interest in today's liberated world is History of Women. This class is offered in the fall and spring only.



Mr. Doran

Math

John Doran is a new face at Boone Campus this year. He is an instructor at DMACC for calculus, statistics and finite math courses during the fall quarter.

In future quarters, he will be teaching college algebra, pre-calculus and trigonometry.

At the present, he is also teaching calculus as a night class at the Ankeny Campus.

John is living in Boone with his wife, Jean, and their children, Jennifer, 11, and Jeffrey, 6.

John's hobbies include camping, reading, computer programming and amateur radio.

John's first time teaching in a college, but he taught five years at Mount Pleasant High School.

Between these two positions he worked at Motorola in Mount Pleasant for three years as a quality insurance manager, which involved statistical analysis. He liked teaching best, so he came to Boone Campus.

Before John taught at Mount Pleasant High School, he graduated from Tama High School and attended the University of Colorado. From there he went to San Diego State University.

John would like to know if anyone would be interested in beginning computer programming club or a radio operating club. If so, they should contact him as soon as possible.

Art

Mrs. Schroeder presides over the art department. Her classes include Art Appreciation, and Fundamentals of Drawing I and II.



Chemistry Biology

Botany, Environmental Biology, Survey of Anatomy and Physiology, Invertebrate Zoology, and Geography all keep Mr. Ryan hopping about the Biology Lab.

Mr. Ryan has been at the college for many years. He also runs a duplicating machine and paper vending in his spare time.

Mr. Johnson instructs two sections in Principals of Biology, Zoology, & Biology of Organisms.

Mr. Johnson keeps his hours very numbered by being athletic director for the college. During the winter he is difficult to find since he is in charge of many tournaments.

Mr. Alexander

C.J. Alexander has been an instructor at DMACC for two years. C.J. teaches Intermediate Algebra; Chemistry 102, 103, 104, 106, 107, 108, 112,

C.J. and his family reside on the outskirts of Des Moines. Since C.J. teaches a night class, he is forced to stay in Boone on many evenings. Otherwise he commutes each day.

Bookkeeping/Accounting

Mel Holthus is an instructor here at DMACC. He teaches various accounting and bookkeeping courses throughout the year.

Mel lives in Boone with his wife, Judy, and their children, Bruce and Janet. Judy graduated from UNI and now teaches at United Community School.

For you snake fans, Janet, Mel's daughter, has a pet boa constrictor named Arnold.

Mel attended the University of Northern Colorado and earned a bachelor's degree in 1966, and a master's degree in 1974. He then taught overseas in Guam for three years, came back to the mainland and worked one year in private industry before taking a teaching position in Kit Carson, Colorado, his hometown. He remained there for two years.

After receiving his graduate degree he worked for a CPA firm in Colorado for one year before coming to Boone.

Presently, Mel is an advisor for Phi Beta Lambda and the president of the employees association at Boone Campus.


In his spare time, Mel enjoys golf, reading, and does tax preparations.

Physics

Mr. Bob Girvan is in charge of the Physics Department. He teaches such classes as Classical Physics I, II, III, College Physics I, II, III, Engineering Graphics I and II, and Methods of Engineering Computations.

PLAN NOW TO ATTEND THE ANNUAL ROTARY CLUB SPONSORED STEAK FRY TO BE HELD AT THE BOONE CAMPUS GYMNASIUM. PROCEEDS ARE USED FOR BOONE CAMPUS SCHOLARSHIPS.

Monday, Oct. 20, 5:30 to 8 p.m. Tickets are \$5.50.



Pizza Hut

INFLATION FIGHTER NIGHT

Celebrate 'Hump' Day
with 1975 Prices
Wednesday night
Have it Your Way
at
1608 S. Story
432-5000 until 10

Slow Pitch softball

by SHARON JONES

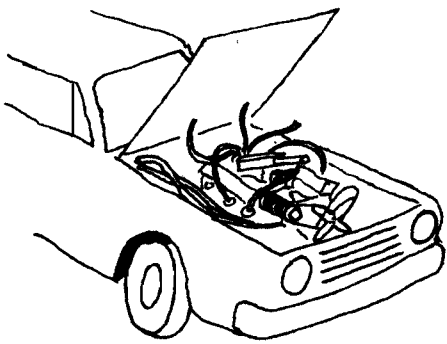
The first game of the Slow Pitch Softball Intramurals began Monday, Sept. 22. Mark Adkins is the captain of the team "One," called "Crush," and Shaela Young is the captain of team "Two." The captain of the third team, the "Heavy Hitters", is Tim Orr and team four is coached by Mary Dembinski and Gregg Fjelland.

There is a maximum of seven guys and seven girls. There are to be 10 playing at a time. No more than three junior college baseball players are to be on the playing field at one time for any team. Games will be scheduled around the junior college baseball and softball games.

Mon. Sept. 22	5:00	1 vs. 4
Tues. Sept. 23	5:00	2 vs. 3
Wed. Sept. 24	5:00	1 vs. 3
	6:00	4 vs. 2
Thur. Sept. 25	5:00	3 vs. 4
	6:00	1 vs. 2
Sun. Sept. 28	Rain Date	
Mon. Sept. 29	5:00	1 vs. 4
Tues. Sept. 30	5:00	2 vs. 3
Wed. Oct. 1	5:00	1 vs. 3
	6:00	4 vs. 2
Thur. Oct. 2	Rain Date	
Mon. Oct. 6	5:00	3 vs. 4
Tues. Oct. 7	5:00	1 vs. 2
Wed. Oct. 8	Rain Date	

The rules are:

1. Batting orders will be guy, gal, guy, girl, etc.
 2. A game can be played with as few as eight players, but an automatic out is given when those names, missing, come up in the batting order.
 3. Games are seven innings. The 10-run rule is in effect at the end of the fifth inning.
 4. Pitchers may call a walk instead of pitching four balls.
 5. No metal spikes are allowed.
- Games that are rained out will be made up on the rain dates, but signs will be posted on made-up games. If a team cannot play on a certain day it is to contact Patti Long three days before the scheduled game.



Stop By For All
Your Car Needs

5th & Story

MOBIL

24 Hour Wrecker Service Also

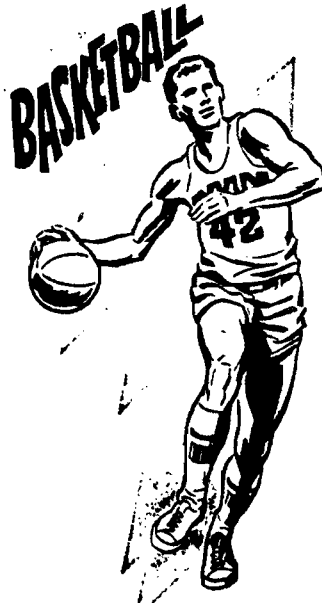


Sports

By JEFF JOHNSON

Sports Editor

GO



BEARS

Editor's Desk

Well, this first issue is finally finished. We really weren't sure where to begin this year, but with the help of our new advisor, Rosemary Westphalen, we actually met our deadline. Everyone on the staff has put in a great deal of effort (and late hours). The mistakes are there, but at least we know now where we need to improve. The Bear Facts paper is a lot of fun because so much goes on on this campus--giving us so much to cover. There are a great deal of people to mention and thank for all of the help: the entire Bear Facts staff, the faculty and administration of the college, the Boone News-Republican, and the students who read the paper. The next issue will, hopefully, contain more info. about the students themselves and with everyone's help--will prove to be even better than this issue.

Linda
&
Marcia

Schedule given for Boone Bears basketball games

by JEFF JOHNSON

The winter basketball season will soon be here. A schedule of the mens basketball games is included in this issue of Bear Facts. Be sure to look it over to see which games you would like to attend. Give our athletic programs your backing. Hope to see you at the gym this winter.

Date	Opponent	Site	Time
12/2	Bear Classic	Boone	6:00
12/3	Bear Classic	Boone	6:00
12/6	Sioux Empire	Away	3:00
12/9	Waldorf	Home	8:00
12/13	Kirkwood	Away	8:00
12/18	Marshalltown	Home	8:00
1/6	Hutchinson, Kan.	Away	8:00
1/7	Pratt, Kan.	Away	8:00
1/12	Creston	Home	7:30
1/14	Marshalltown	Away	8:00
1/17	Clarinda	Away	7:30
1/19	Ellsworth	Home	8:00
1/24	Waldorf	Away	8:00
1/27	Ellsworth	Away	8:15
1/29	Council Bluffs	Home	8:00
2/2	Fort Dodge	Home	8:00
2/5	Sioux Empire	Home	7:30
2/7	Mason City	Away	7:30
2/11	Creston	Away	7:30
2/16	Clarinda	Home	7:30
2/18	Kirkwood	Home	7:30
2/21	Council Bluffs	Away	2:00
2/25	Fort Dodge	Away	7:30
2/28	Mason City	Home	7:30
3/3	Iowa Lakes	Away	7:30
3/6,7,8	Reg. XI Finals Burlington		Time to be announced TBA

All photographs in the BEAR FACTS are taken by:

Kathy Abel
Diane Cassady
John Matt

Rec Students to Iowa convention

The Recreation students will be going to Cedar Falls on October 2, and 3, for the Iowa Park and Recreational Association Convention. Also, some of the students may be going to the National Park and Recreational Congress in Phoenix, Arizona. About 20,000 people from other school will be attending this also.

SMART THINKING KNOWS NO AGE!



Boone Bears - ISU in fall baseball scrimmage

by JEFF JOHNSON

Sunday afternoon, Sept. 21, the Boone Bears took on the Iowa State Cyclones in a fall baseball scrimmage.

The game was held at L.C. "Capp" Timm field in Ames, Iowa. The teams played two nine-inning games with the first game starting at 1:30 p.m.. As to be expected, Iowa State came out on top in both games; however the Bears played very well. Boone even took a short-lived 1-0 lead in the very first inning.

Craig Howard, the Bears sophomore centerfielder, smashed a shot in the gap in right centerfield for a double, advanced on a passed ball and scored on a wild throw. Coach John Smith seemed to be pleased with the all around play. Smith pointed out that there were too many mental mistakes and that the pitchers gave up too many walks. Improvement in these two categories will come along with more practice and actual game experience.

Coach Smith used nine of his 16 pitchers-trying to give each two innings of play. The Bears took forty to 50 ball players to the scrimmage and all but a few saw action. Those not able to play much or at all were able to start in the Boone scrimmage against Ellsworth.



GREG STANLEY PITCHES the ball during a recent scrimmage between the Boone Bears and ISU.



GREG STANLEY AND COACH SMITH discuss the performance of the Boone players.

All students may use gym facility

by JEFF JOHNSON

Want a place to workout and get in shape? The gymnasium is the place to be. The gym is now open on Thursday nights and during each school day. A weight machine is located in the balcony area, behind the bleachers. Anyone can use these facilities at anytime unless they conflict with physical education activities. Basketball practice and baseball practice will also be being held in the gym in the winter time. The gym floor and baskets may not be available all the time because of basketball practice or games. The weight machine may not be available at all times because the baseball team may have their batting nets hanging in the balcony for hitting practice. When these facilities are open for use, everyone is welcome to participate in their use.

Baseball underway

by JEFF JOHNSON

Boone has already begun it's fall baseball practices. Between 40 and 50 players have been present at each practice.

The Bears will be coached by John Smith and this year the captains will be sophomores Craig Howard and Sammy Crouse.

Workouts began on Sept. 9 at Memorial Park in Boone. Outdoor practice is anticipated to last through the first six weeks of school. When it begins to get cold, practices will be held inside the gym in preparation for the spring season.

Nets will be put up for batting practice and pitchers will also throw indoors.

Fall practices start out with laps around the field and a series of calisthenics. Pitchers then go and run while infielder and outfielder warm-up their arms. Pitchers practice in the bull pens, on the mound and sometimes in batting practice. They also work on pickoffs and run-downs.

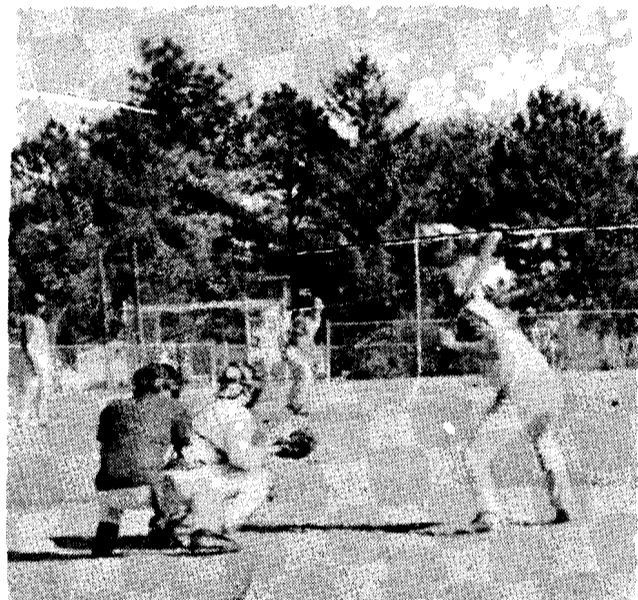
Outfielders throw to bases, bat and run, catch popflies and ground balls.

Infielders work on double plays, run-downs and take a lot of ground balls. Infielders then bat.

Catchers work with the pitchers and

help at batting practice. They work on blocking the ball and throwing to bases.

Coach Smith has set up some fall scrimmages for the team for the purpose of his looking at the members, and allowing some major league scouts to do the same.



CRAIG HOWARD takes his turn at bat.

Bears busy with scrimmage series

by JEFF JOHNSON

The Boone Bears have been busy with their fall baseball scrimmages. They have already scrimmaged four different teams. The Bears played Iowa State for 18 innings, Ellsworth fifteen innings, Grand View twelve innings and Simpson fifteen innings.

If you haven't had a chance to see the Bears in action, they still have a couple of more scrimmages to play. No official score is kept but the action is still intense and exciting.

Outside practices and scrimmages will soon conclude due to the oncoming of winter. Practices will be held in the gymnasium all winter long in preparation for the bears Spring season. Batting nets will be hung in the balcony of the gym for hitting practice.

If you like baseball, come on out to Memorial Park this Fall, or sure this Spring. The Bears have over fifty scheduled games for their Spring season. Come out and see them play.

BULL IN A
CHINA SHOP

To be presented
Friday, Oct. 17
at 7:30 p.m.
by Boone Campus
students.

Don't miss it

Godfather's

Pizza



A Pizza You Can't Refuse

Watch for
Weekly
Specials

1512 S. Marshall

432-5573

Library services of benefit to campus

by LINDA TABOR

"The library is here for you to use. Whatever your information needs, we on the library staff are glad to help you in any way we can." This quote is on the front page of the DMACC Library information folder. The library is open from 7:45 a.m. - 4:30 p.m. Monday-Friday and 6:30 p.m.-9:30 p.m. on Monday-Thursday. For your convenience it is also open from 6:00 p.m.-10:00 p.m. on Sunday's.

The library developed a Fine Policy for the 1980-81 year.

Fines for two week materials are five cents per day for one-to-five days overdue; ten cents per day for six-to-10 days overdue; and 25 cents per day for each day thereafter.

Reserve materials may be checked out for two hours from 8 a.m. to 1 p.m. and overnight after 1 p.m. Fines for these materials is 25 cents for the first hour or part of an hour with a 10 cent fine for each hour thereafter.

Lost materials will be fined according to whether they are overdue or a replacement cost

plus a \$2.50 processing fee.

The library is also available for interlibrary loan. If you need a book or periodical from one of the participating libraries (such as ISU, Drake, etc.), just give all information to the librarian. This must include the author, title, publication date, and so on. The only fee is for photocopying at 10 cents per page.

A photocopier is available in the library. The fee is five cents per page. Remember to observe the U.S. copyright law in having things duplicated.



OCTOBER

(Telephone: 515-432-7203)

1980

Des Moines Area Community College, Boone Campus, 1125 Hancock Drive, Boone, IA 50036

SUN	MON	TUE	WED	THU	FRI	SAT																																																																																											
<p>SEPTEMBER</p> <table border="1"> <tr><td>S</td><td>M</td><td>T</td><td>W</td><td>T</td><td>F</td><td>S</td></tr> <tr><td>1</td><td>2</td><td>3</td><td>4</td><td>5</td><td>6</td><td></td></tr> <tr><td>7</td><td>8</td><td>9</td><td>10</td><td>11</td><td>12</td><td>13</td></tr> <tr><td>14</td><td>15</td><td>16</td><td>17</td><td>18</td><td>19</td><td>20</td></tr> <tr><td>21</td><td>22</td><td>23</td><td>24</td><td>25</td><td>26</td><td>27</td></tr> <tr><td>28</td><td>29</td><td>30</td><td></td><td></td><td></td><td></td></tr> </table>	S	M	T	W	T	F	S	1	2	3	4	5	6		7	8	9	10	11	12	13	14	15	16	17	18	19	20	21	22	23	24	25	26	27	28	29	30					<p>NOVEMBER</p> <table border="1"> <tr><td>S</td><td>M</td><td>T</td><td>W</td><td>T</td><td>F</td><td>S</td></tr> <tr><td></td><td></td><td></td><td></td><td></td><td></td><td>1</td></tr> <tr><td>2</td><td>3</td><td>4</td><td>5</td><td>6</td><td>7</td><td>8</td></tr> <tr><td>9</td><td>10</td><td>11</td><td>12</td><td>13</td><td>14</td><td>15</td></tr> <tr><td>16</td><td>17</td><td>18</td><td>19</td><td>20</td><td>21</td><td>22</td></tr> <tr><td>23</td><td>24</td><td>25</td><td>26</td><td>27</td><td>28</td><td>29</td></tr> <tr><td>30</td><td></td><td></td><td></td><td></td><td></td><td></td></tr> </table>	S	M	T	W	T	F	S							1	2	3	4	5	6	7	8	9	10	11	12	13	14	15	16	17	18	19	20	21	22	23	24	25	26	27	28	29	30							<p>Phi Beta Lambda Elect Officers for 1980-81 Oct. 1, 1980</p> <p>Rehearsals Aud. Reserved Boone Campus Play</p>	<p>STUDENT SENATE ELECTIONS (VOTES TO BE TALLIED) -Aud. Reserved- College Night at Jefferson</p>	<p>College Night at Audubon</p> <p>Recreation Club Attends Iowa Parks and Recreation Workshop in Cedar Falls, Iowa</p>	<p>PCS Workshop at Boone Campus 8:30 a.m.</p>	<p>4</p>
S	M	T	W	T	F	S																																																																																											
1	2	3	4	5	6																																																																																												
7	8	9	10	11	12	13																																																																																											
14	15	16	17	18	19	20																																																																																											
21	22	23	24	25	26	27																																																																																											
28	29	30																																																																																															
S	M	T	W	T	F	S																																																																																											
						1																																																																																											
2	3	4	5	6	7	8																																																																																											
9	10	11	12	13	14	15																																																																																											
16	17	18	19	20	21	22																																																																																											
23	24	25	26	27	28	29																																																																																											
30																																																																																																	
5	6	7	8	9	10	11																																																																																											
Auditorium Reserved Boone Campus, DMACC Play Rehearsals		Foundation Board Members Meeting 9:30 a.m.	Buena Vista College Rep. 8:30 a.m.-noon	Advisory Comm. Mtg.-Carroll (Nrs.)																																																																																													
12	13	14	15	16	17	18																																																																																											
	COLUMBUS DAY Gym-9th Annual Boone Rotary Club Steak Fry \$5.50 Tickets 5:30p.m.-8:00p.m. Serving.	Employee Association Meeting 3:10 p.m. Rm TBA	MID-TERM FALL QUARTER	Morningside College Representative on Campus 9:30-1:00	DMACC, Boone Campus Play "Bull in A China Shop" 7:30 p.m. Auditorium	ACT Test 8-12 noon Auditorium																																																																																											
Auditorium Reserved Boone Campus, DMACC Play Rehearsals																																																																																																	
19	20	21	22	23	24	25																																																																																											
	DMACC Board of Directors at Boone Campus 4:30pm Reception for Boone Campus Staff & Faculty--Student Center 5:30pm Bd. Mtg. Rm103					Auditorium- Jr. Miss Pageant sponsored by Boone Soroptimist																																																																																											
	NATIONAL PARK & RECREATION CONGRESS at Phoenix, Arizona				Aud. pm Reserved Soroptimist																																																																																												
26	27	28	29	30	31																																																																																												
Auditorium Reserved Boone High School Play Rehearsals				9:45 Nursing Students United Meeting; 10:30 Boone ADN Nrsng. Students Meeting	(Last Day to Drop Classes Fall Qtr. November 7, 1980.) (Fall Qtr. Ends Nov. 24, 1980) (Wtr. Qtr. Begins Dec. 1, 1980)																																																																																												
				Oct. 31-Nov. 2 PBL Regional Leadership Conference; Cincinnati, OH																																																																																													

October 1980

PAMIDA

DISCOUNT CENTER

The Best For Less

Conveniently Located for a Variety of Students Needs

South Marshall 432-8755



EVERYONE IS INVITED to attend the coming presentation of the Boone Campus Drama Department, "Bull in a China Shop." Above, Sandi Johnson is seen across the "couch" while Tony Thonburg and Kevin Isreal emote. The presentation will be on Friday, Oct. 17, in the Boone Campus Auditorium.